

## ANGPTL7 Antibody

Catalog No: #36102

Orders: [order@signalwayantibody.com](mailto:order@signalwayantibody.com)Support: [tech@signalwayantibody.com](mailto:tech@signalwayantibody.com)

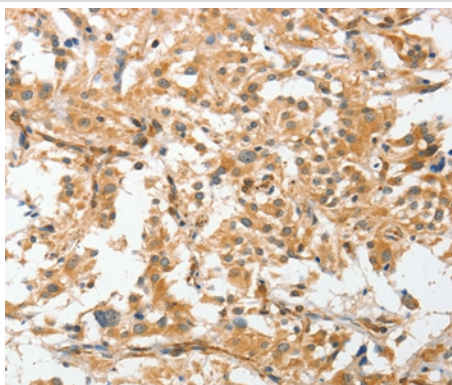
## Description

Product Name	ANGPTL7 Antibody
Host Species	Rabbit
Clonality	Polyclonal
Purification	Antigen affinity purification.
Applications	IHC
Species Reactivity	Hu
Specificity	The antibody detects endogenous levels of total ANGPTL7 protein.
Immunogen Type	Recombinant Protein
Immunogen Description	Fusion protein corresponding to a region derived from internal residues of human angiotensin-like 7
Target Name	ANGPTL7
Other Names	AngX; CDT6; dJ647M16.1; RP4-647M16.2
Accession No.	Swiss-Prot#: O43827NCBI Gene ID: 10218Gene Accssion: BC001881
Uniprot	O43827
GeneID	10218;
Concentration	1.3mg/ml
Formulation	Rabbit IgG in pH7.4 PBS, 0.05% NaN <sub>3</sub> , 40% Glycerol.
Storage	Store at -20°C

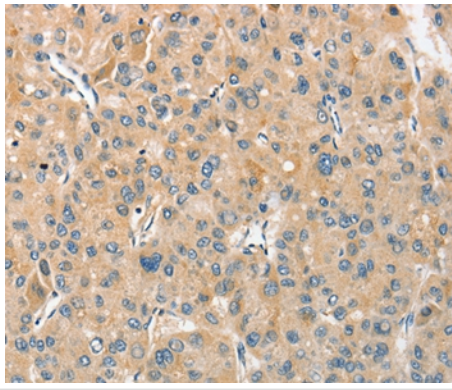
## Application Details

Immunohistochemistry: 1:25-1:100

## Images



Immunohistochemical analysis of paraffin-embedded Human thyroid cancer tissue using #36102 at dilution 1/30.



Immunohistochemical analysis of paraffin-embedded Human liver cancer tissue using #36102 at dilution 1/30.

## Background

Angiopoietin-related protein 7 is a protein that in humans is encoded by the *ANGPTL7* gene, a member of the ANGPTL family. Highly and specifically expressed in the cornea where is confined to the stromal layer.

Note: This product is for in vitro research use only