

ANLN Antibody

Catalog No: #36104

Orders: order@signalwayantibody.comSupport: tech@signalwayantibody.com

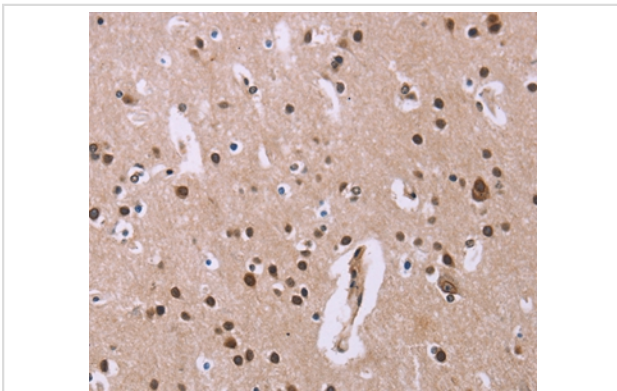
Description

Product Name	ANLN Antibody
Host Species	Rabbit
Clonality	Polyclonal
Purification	Antigen affinity purification.
Applications	IHC
Species Reactivity	Hu
Specificity	The antibody detects endogenous levels of total ANLN protein.
Immunogen Type	Recombinant Protein
Immunogen Description	Fusion protein corresponding to residues near the C terminal of human anillin, actin binding protein
Target Name	ANLN
Other Names	scra; Scrops
Accession No.	Swiss-Prot#: Q9NQW6NCBI Gene ID: 54443Gene Accssion: BC034692
Uniprot	Q9NQW6
GeneID	54443;
Concentration	0.7mg/ml
Formulation	Rabbit IgG in pH7.4 PBS, 0.05% NaN ₃ , 40% Glycerol.
Storage	Store at -20°C

Application Details

Immunohistochemistry: 1:25-1:100

Images



Immunohistochemical analysis of paraffin-embedded Human brain tissue using #36104 at dilution 1/20.

Background

?Anillin, also known as scrops homolog, is an evolutionarily conserved Actin- binding protein required for cytokinesis that was first identified in *Drosophila melanogaster*. Anillin is a ubiquitously expressed protein with highest expression levels in the central nervous system. It is predominantly found in the nucleus and it localizes to the cleavage furrow during cytokinesis, forming a ring with the help of Rac GTPase. During cytokinesis, Anillin interacts with CD2AP and functions to concentrate Rho A and maintain the localization of active Myosin. In Anillin knockout cells the cleavage furrow

fails to complete ingression. Anillin expression levels fluctuate with the cell cycle, peaking in mitosis.?

Note: This product is for in vitro research use only