

## AP2S1 Antibody

Catalog No: #36110

Orders: order@signalwayantibody.com

Support: tech@signalwayantibody.com

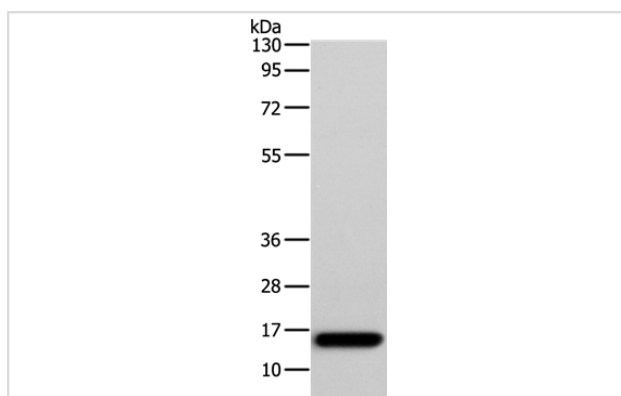
## Description

Product Name	AP2S1 Antibody
Host Species	Rabbit
Clonality	Polyclonal
Purification	Antigen affinity purification.
Applications	WB
Species Reactivity	Hu Ms Rt
Specificity	The antibody detects endogenous levels of total AP2S1 protein.
Immunogen Type	Recombinant Protein
Immunogen Description	Full length fusion protein
Target Name	AP2S1
Other Names	AP17; HHC3; CLAPS2; AP17-DELTA
Accession No.	Swiss-Prot#: P53680NCBI Gene ID: 1175Gene Accssion: BC006337
Uniprot	P53680
GeneID	1175;
SDS-PAGE MW	17kd
Concentration	0.9mg/ml
Formulation	Rabbit IgG in pH7.4 PBS, 0.05% NaN <sub>3</sub> , 40% Glycerol.
Storage	Store at -20°C

## Application Details

Western blotting: 1:200-1:1000

## Images



Gel: 15+12%SDS-PAGE  
 Lysates (from left to right): Human fetal muscle tissue  
 Amount of lysate: 40ug per lane  
 Primary antibody: 1/250 dilution  
 Secondary antibody dilution: 1/8000  
 Exposure time: 1 minute

## Background

One of two major clathrin-associated adaptor complexes, AP-2, is a heterotetramer which is associated with the plasma membrane. This complex is composed of two large chains, a medium chain, and a small chain. This gene encodes the small chain of this complex. Alternative splicing has been

observed in this gene and results in two known transcripts.

---

Note: This product is for in vitro research use only