

## ANAPC10 Antibody

Catalog No: #36112

Orders: [order@signalwayantibody.com](mailto:order@signalwayantibody.com)Support: [tech@signalwayantibody.com](mailto:tech@signalwayantibody.com)

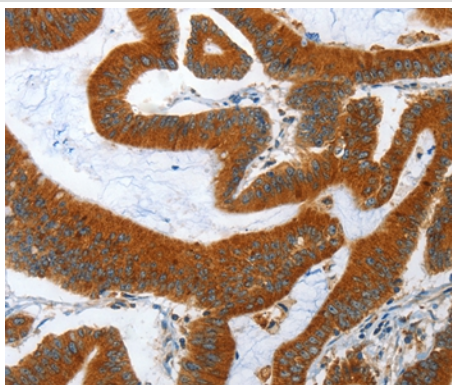
## Description

Product Name	ANAPC10 Antibody
Host Species	Rabbit
Clonality	Polyclonal
Purification	Antigen affinity purification.
Applications	IHC
Species Reactivity	Hu
Specificity	The antibody detects endogenous levels of total ANAPC10 protein.
Immunogen Type	Recombinant Protein
Immunogen Description	Full length fusion protein
Target Name	ANAPC10
Other Names	DOC1; APC10
Accession No.	Swiss-Prot#: Q9UM13NCBI Gene ID: 10393Gene Accssion: BC005217
Uniprot	Q9UM13
GeneID	10393;
Concentration	1.5mg/ml
Formulation	Rabbit IgG in pH7.4 PBS, 0.05% NaN <sub>3</sub> , 40% Glycerol.
Storage	Store at -20°C

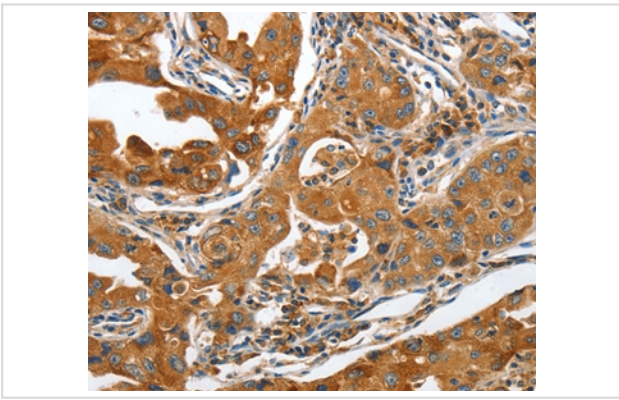
## Application Details

Immunohistochemistry: 1:50-1:200

## Images



Immunohistochemical analysis of paraffin-embedded Human colon cancer tissue using #36112 at dilution 1/40.



Immunohistochemical analysis of paraffin-embedded Human lung cancer tissue using #36112 at dilution 1/40.

## Background

ANAPC10 is a core subunit of the anaphase-promoting complex (APC), or cyclosome, a ubiquitin protein ligase that is essential for progression through the cell cycle. APC initiates sister chromatid separation by ubiquitinating the anaphase inhibitor securin (PTTG1; MIM 604147) and triggers exit from mitosis by ubiquitinating cyclin B (CCNB1; MIM 123836), the activating subunit of cyclin-dependent kinase-1 (CDK1; MIM 116940)

Note: This product is for in vitro research use only