

ANAPC5 Antibody

Catalog No: #36113

Orders: order@signalwayantibody.com

Support: tech@signalwayantibody.com

Description

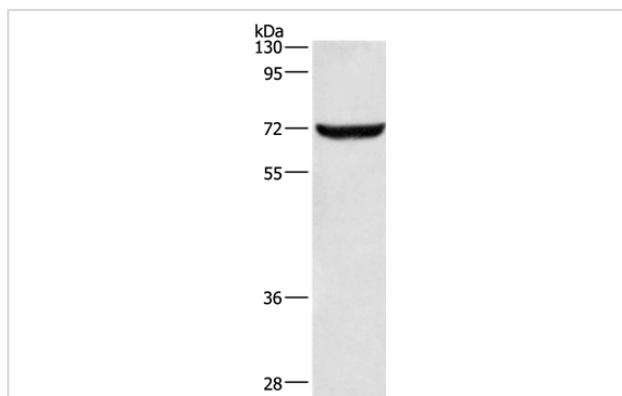
Product Name	ANAPC5 Antibody
Host Species	Rabbit
Clonality	Polyclonal
Purification	Antigen affinity purification.
Applications	WB IHC
Species Reactivity	Hu Ms
Specificity	The antibody detects endogenous levels of total ANAPC5 protein.
Immunogen Type	Recombinant Protein
Immunogen Description	Fusion protein corresponding to residues near the C terminal of human anaphase promoting complex subunit 5
Target Name	ANAPC5
Other Names	APC5
Accession No.	Swiss-Prot#: Q9UJX4NCBI Gene ID: 51433Gene Accsson: BC006301
Uniprot	Q9UJX4
GeneID	51433;
SDS-PAGE MW	85kd
Concentration	1.5mg/ml
Formulation	Rabbit IgG in pH7.4 PBS, 0.05% NaN ₃ , 40% Glycerol.
Storage	Store at -20°C

Application Details

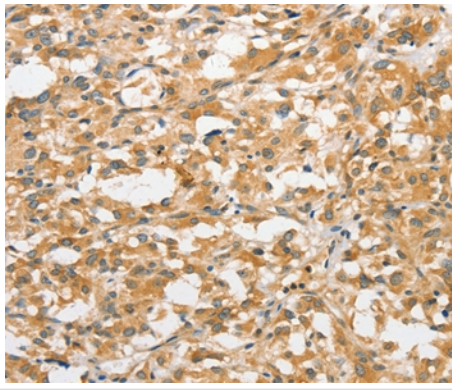
Western blotting: 1:200-1:1000

Immunohistochemistry: 1:50-1:200

Images



Gel: 8%SDS-PAGE
Lysate: 40ug NIH/3T3 cell
Primary antibody: 1/187.5 dilution
Secondary antibody dilution: 1/8000
Exposure time: 10 seconds



Immunohistochemical analysis of paraffin-embedded Human thyroid cancer tissue using #36113 at dilution 1/30.

Background

This gene encodes a tetratricopeptide repeat-containing component of the anaphase promoting complex/cyclosome (APC/C), a large E3 ubiquitin ligase that controls cell cycle progression by targeting a number of cell cycle regulators such as B-type cyclins for 26S proteasome-mediated degradation through ubiquitination. The encoded protein is required for the proper ubiquitination function of APC/C and for the interaction of APC/C with transcription coactivators. It also interacts with polyA binding protein and represses internal ribosome entry site-mediated translation. Multiple transcript variants encoding different isoforms have been found for this gene.?

Note: This product is for in vitro research use only