

ATG10 Antibody

Catalog No: #36115

Orders: order@signalwayantibody.com

Support: tech@signalwayantibody.com

Description

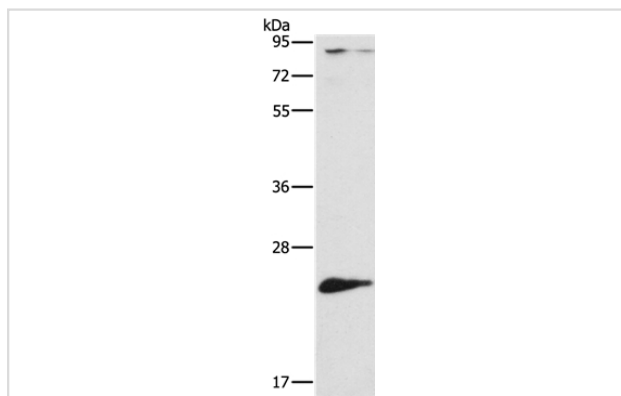
Product Name	ATG10 Antibody
Host Species	Rabbit
Clonality	Polyclonal
Purification	Antigen affinity purification.
Applications	WB IHC
Species Reactivity	Hu Ms
Specificity	The antibody detects endogenous levels of total ATG10 protein.
Immunogen Type	Recombinant Protein
Immunogen Description	Fusion protein corresponding to a region derived from internal residues of human autophagy related 10
Target Name	ATG10
Other Names	APG10; APG10L; pp12616
Accession No.	Swiss-Prot#: Q9H0Y0NCBI Gene ID: 83734Gene Accssion: BC004551
Uniprot	Q9H0Y0
GeneID	83734;
SDS-PAGE MW	25kd
Concentration	2.4mg/ml
Formulation	Rabbit IgG in pH7.4 PBS, 0.05% NaN ₃ , 40% Glycerol.
Storage	Store at -20°C

Application Details

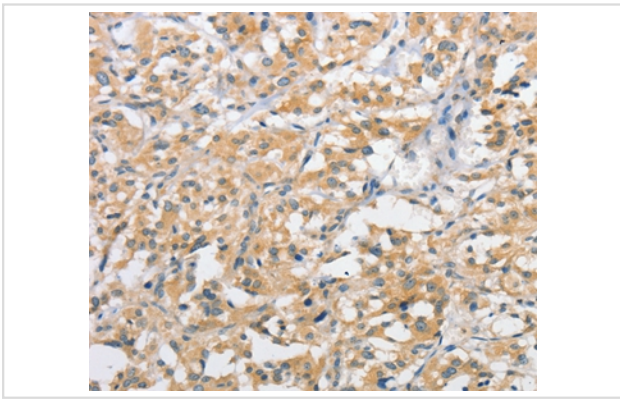
Western blotting: 1:200-1:1000

Immunohistochemistry: 1:50-1:200

Images



Gel: 10%SDS-PAGE
 Lysates (from left to right): Mouse liver tissue
 Amount of lysate: 50ug per lane
 Primary antibody: 1/500 dilution
 Secondary antibody dilution: 1/8000
 Exposure time: 1 minute



Immunohistochemical analysis of paraffin-embedded Human thyroid cancer tissue using #36115 at dilution 1/60.

Background

Autophagy is a process for the bulk degradation of cytosolic compartments by lysosomes. ATG10 is an E2-like enzyme involved in 2 ubiquitin-like modifications essential for autophagosome formation: ATG12 (MIM 609608)-ATG5 (MIM 604261) conjugation and modification of a soluble form of MAP-LC3 (MAP1LC3A; MIM 601242), a homolog of yeast Apg8, to a membrane-bound form.

Note: This product is for in vitro research use only