

ATG5 Antibody

Catalog No: #36116

Orders: order@signalwayantibody.comSupport: tech@signalwayantibody.com

Description

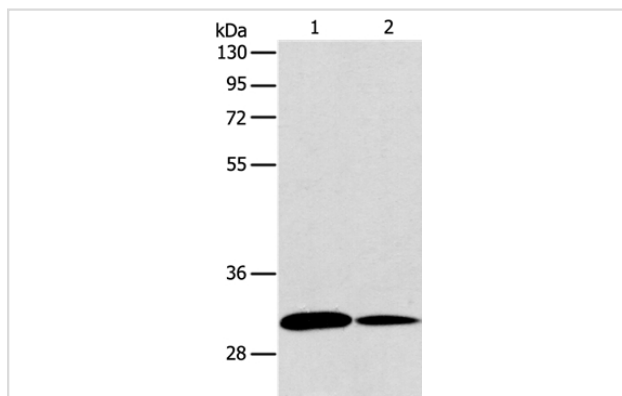
Product Name	ATG5 Antibody
Host Species	Rabbit
Clonality	Polyclonal
Purification	Antigen affinity purification.
Applications	WB IHC
Species Reactivity	Hu Ms
Specificity	The antibody detects endogenous levels of total ATG5 protein.
Immunogen Type	Recombinant Protein
Immunogen Description	Full length fusion protein
Target Name	ATG5
Other Names	ASP; APG5; APG5L; hAPG5; APG5-LIKE
Accession No.	Swiss-Prot#: Q9H1Y0NCBI Gene ID: 9474Gene Accssion: BC002699
Uniprot	Q9H1Y0
GeneID	9474;
SDS-PAGE MW	32kd
Concentration	1.9mg/ml
Formulation	Rabbit IgG in pH7.4 PBS, 0.05% NaN ₃ , 40% Glycerol.
Storage	Store at -20°C

Application Details

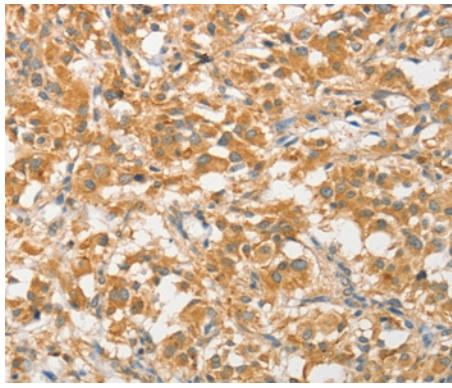
Western blotting: 1:500-1:2000

Immunohistochemistry: 1:50-1:200

Images



Gel: 12%SDS-PAGE
Lysates (from left to right): NIH/3T3 and A172 cell
Amount of lysate: 40ug per lane
Primary antibody: 1/475 dilution
Secondary antibody dilution: 1/8000
Exposure time: 20 seconds



Immunohistochemical analysis of paraffin-embedded Human thyroid cancer tissue using #36116 at dilution 1/40.

Background

Autophagy protein 5 is a protein that in humans is encoded by the ATG5 gene. It is an E3 ubiquitin ligase which is necessary for autophagy due to its role in autophagosome elongation. It is activated by ATG7 and forms a complex with ATG12 and ATG16L1. This complex is necessary for LC3-1 conjugation to PE to form LC3-II.

Note: This product is for in vitro research use only