

ATG12 Antibody

Catalog No: #36117

Orders: order@signalwayantibody.comSupport: tech@signalwayantibody.com

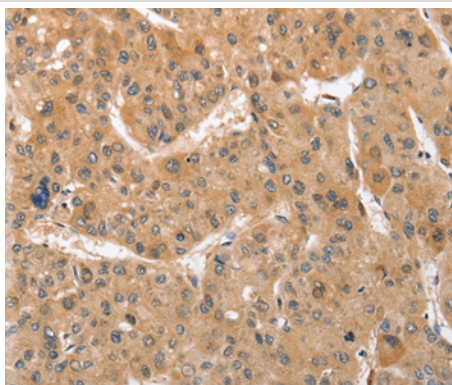
Description

Product Name	ATG12 Antibody
Host Species	Rabbit
Clonality	Polyclonal
Purification	Antigen affinity purification.
Applications	IHC
Species Reactivity	Hu
Specificity	The antibody detects endogenous levels of total ATG12 protein.
Immunogen Type	Recombinant Protein
Immunogen Description	Full length fusion protein
Target Name	ATG12
Other Names	APG12; FBR93; APG12L; HAPG12
Accession No.	Swiss-Prot#: O94817NCBI Gene ID: 9140Gene Accssion: BC011033
Uniprot	O94817
GeneID	9140;
Concentration	3.3mg/ml
Formulation	Rabbit IgG in pH7.4 PBS, 0.05% NaN ₃ , 40% Glycerol.
Storage	Store at -20°C

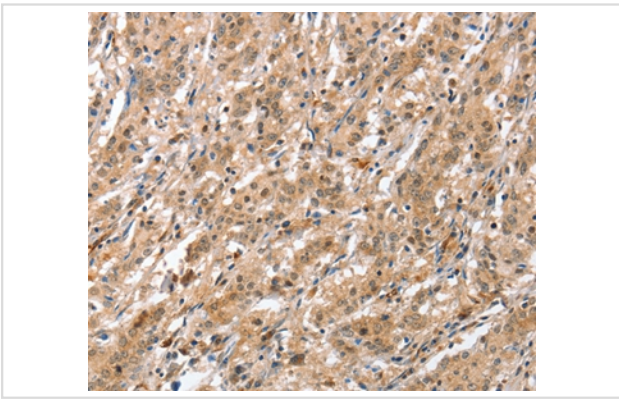
Application Details

Immunohistochemistry: 1:50-1:200

Images



Immunohistochemical analysis of paraffin-embedded Human liver cancer tissue using #36117 at dilution 1/70.



Immunohistochemical analysis of paraffin-embedded Human gastric cancer tissue using #36117 at dilution 1/70.

Background

Autophagy is a process of bulk protein degradation in which cytoplasmic components, including organelles, are enclosed in double-membrane structures called autophagosomes and delivered to lysosomes or vacuoles for degradation. ATG12 is the human homolog of a yeast protein involved in autophagy.

Note: This product is for in vitro research use only