

CSDE1 antibody

Catalog No: #22089

Orders: order@signalwayantibody.com

Support: tech@signalwayantibody.com

Description

Product Name	CSDE1 antibody
Host Species	Rabbit
Clonality	Polyclonal
Purification	Purified by antigen-affinity chromatography.
Applications	WB IHC IF
Species Reactivity	Hu
Immunogen Type	Recombinant protein
Immunogen Description	Recombinant protein fragment contain a sequence corresponding to a region within amino acids 167 and 372 of CSDE1
Target Name	CSDE1
Accession No.	Swiss-Prot:O75534Gene ID:7812
Uniprot	O75534
GeneID	7812;
Concentration	0.8mg/ml
Formulation	Supplied in 0.1M Tris-buffered saline with 20% Glycerol (pH7.0). 0.01% Thimerosal was added as a preservative.
Storage	Store at -20°C for long term preservation (recommended). Store at 4°C for short term use.

Application Details

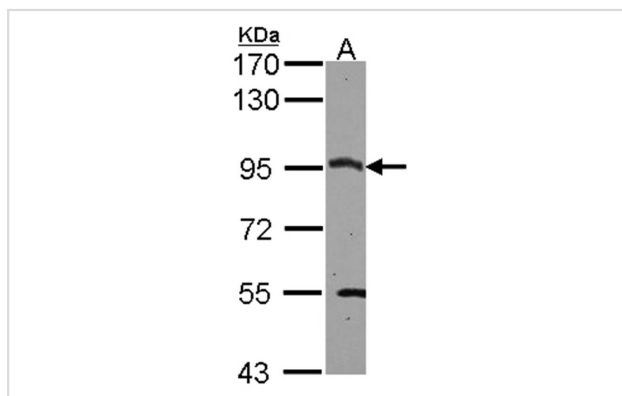
Predicted MW: 86kd

Western blotting: 1:500-1:3000

Immunohistochemistry: 1:100-1:250

Immunofluorescence: 1:100-1:200

Images

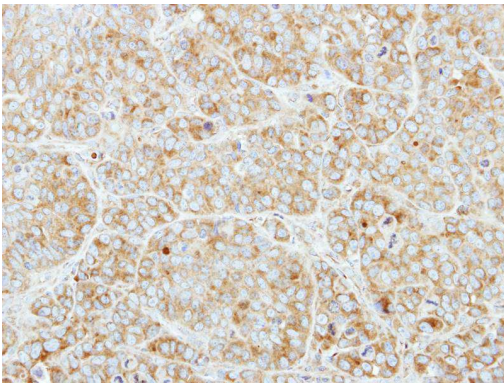


Sample (30 ug of whole cell lysate)

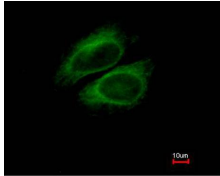
A: HeLa

7.5% SDS PAGE

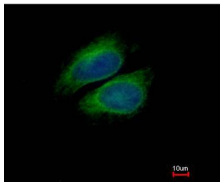
Primary antibody diluted at 1: 3000



Immunohistochemical analysis of paraffin-embedded MCF7 xenograft, using CSDE1 antibody at 1: 250 dilution.



Costained with Hoechst 33342



Immunofluorescence analysis of methanol-fixed HeLa, using CSDE1 antibody at 1: 200 dilution.

Background

RNA-binding protein. Required for internal initiation of translation of human rhinovirus RNA. May be involved in translationally coupled mRNA turnover. Implicated with other RNA-binding proteins in the cytoplasmic deadenylation/translational and decay interplay of the FOS mRNA mediated by the major coding-region determinant of instability (mCRD) domain.

Note: This product is for in vitro research use only