

NAE1 Antibody

Catalog No: #36122

Orders: order@signalwayantibody.com

Support: tech@signalwayantibody.com

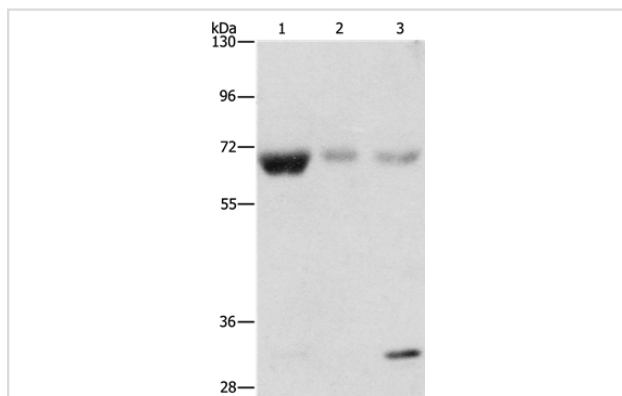
Description

Product Name	NAE1 Antibody
Host Species	Rabbit
Clonality	Polyclonal
Purification	Antigen affinity purification.
Applications	WB
Species Reactivity	Hu
Specificity	The antibody detects endogenous levels of total NAE1 protein.
Immunogen Type	Recombinant Protein
Immunogen Description	Fusion protein corresponding to residues near the C terminal of human NEDD8 activating enzyme E1 subunit 1
Target Name	NAE1
Other Names	HPP1; ula-1; APPBP1; A-116A10.1
Accession No.	Swiss-Prot#: Q13564NCBI Gene ID: 8883Gene Accssion: BC000480
Uniprot	Q13564
GeneID	8883;
SDS-PAGE MW	60kd
Concentration	0.8mg/ml
Formulation	Rabbit IgG in pH7.4 PBS, 0.05% NaN ₃ , 40% Glycerol.
Storage	Store at -20°C

Application Details

Western blotting: 1:200-1:1000

Images



Gel: 8%SDS-PAGE

Lysates (from left to right): Human fetal muscle, kidney and liver tissue

Amount of lysate: 40ug per lane

Primary antibody: 1/500 dilution

Secondary antibody dilution: 1/8000

Exposure time: 1 minute

Background

The protein encoded by this gene binds to the beta-amyloid precursor protein. Beta-amyloid precursor protein is a cell surface protein with

signal-transducing properties, and it is thought to play a role in the pathogenesis of Alzheimer's disease. In addition, the encoded protein can form a heterodimer with UBE1C and bind and activate NEDD8, a ubiquitin-like protein. This protein is required for cell cycle progression through the S/M checkpoint. Three transcript variants encoding different isoforms have been found for this gene.

Note: This product is for in vitro research use only