

Description

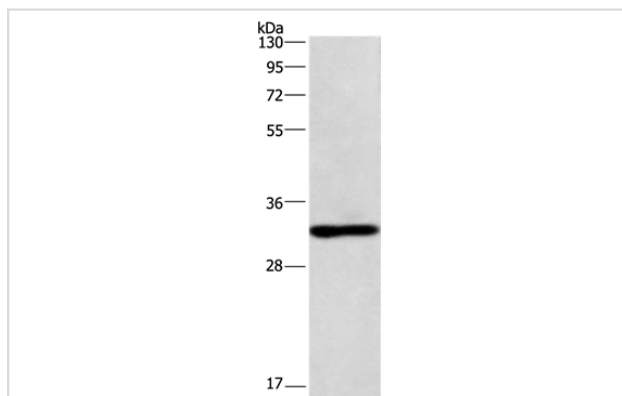
Product Name	NAPSA Antibody
Host Species	Rabbit
Clonality	Polyclonal
Purification	Antigen affinity purification.
Applications	WB IHC
Species Reactivity	Hu Ms
Specificity	The antibody detects endogenous levels of total NAPSA protein.
Immunogen Type	Recombinant Protein
Immunogen Description	Fusion protein corresponding to residues near the C terminal of human napsin A aspartic peptidase
Target Name	NAPSA
Other Names	KAP; Kdap; NAP1; NAPA; SNAPA
Accession No.	Swiss-Prot#: O96009NCBI Gene ID: 9476Gene Accssion: BC017842
Uniprot	O96009
GeneID	9476;
SDS-PAGE MW	45kd
Concentration	2.3mg/ml
Formulation	Rabbit IgG in pH7.4 PBS, 0.05% NaN ₃ , 40% Glycerol.
Storage	Store at -20°C

Application Details

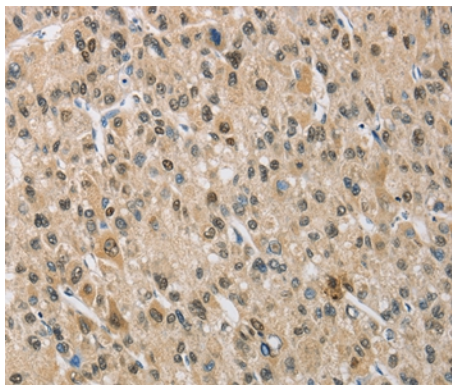
Western blotting: 1:500-1:2000

Immunohistochemistry: 1:50-1:200

Images



Gel: 8%SDS-PAGE
 Lysates (from left to right): Mouse kindey tissue
 Amount of lysate: 40ug per lane
 Primary antibody: 1/500 dilution
 Secondary antibody dilution: 1/8000
 Exposure time: 1 minute



Immunohistochemical analysis of paraffin-embedded Human liver cancer tissue using #36123 at dilution 1/50.

Background

The activation peptides of aspartic proteinases plays role as inhibitors of the active site. These peptide segments, or pro-parts, are deemed important for correct folding, targeting, and control of the activation of aspartic proteinase zymogens. The pronapsin A gene is expressed predominantly in lung and kidney. Its translation product is predicted to be a fully functional, glycosylated aspartic proteinase precursor containing an RGD motif and an additional 18 residues at its C-terminus.

Note: This product is for in vitro research use only