

MIP Antibody

Catalog No: #36125

Orders: order@signalwayantibody.comSupport: tech@signalwayantibody.com

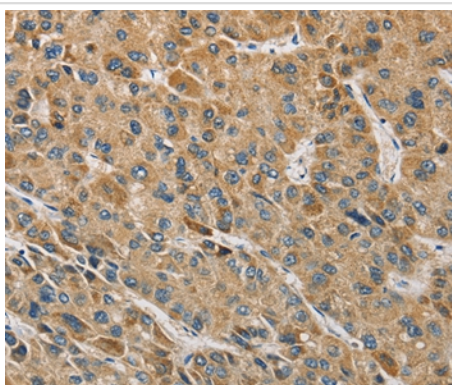
Description

Product Name	MIP Antibody
Host Species	Rabbit
Clonality	Polyclonal
Purification	Antigen affinity purification.
Applications	IHC
Species Reactivity	Hu
Specificity	The antibody detects endogenous levels of total MIP protein.
Immunogen Type	Recombinant Protein
Immunogen Description	Fusion protein corresponding to a region derived from internal residues of human major intrinsic protein of lens fiber
Target Name	MIP
Other Names	AQP0; LIM1; MP26; MIP26; CTRCT15
Accession No.	Swiss-Prot#: P30301NCBI Gene ID: 4284Gene Accssion: BC117474
Uniprot	P30301
GeneID	4284;
Concentration	2.5mg/ml
Formulation	Rabbit IgG in pH7.4 PBS, 0.05% NaN ₃ , 40% Glycerol.
Storage	Store at -20°C

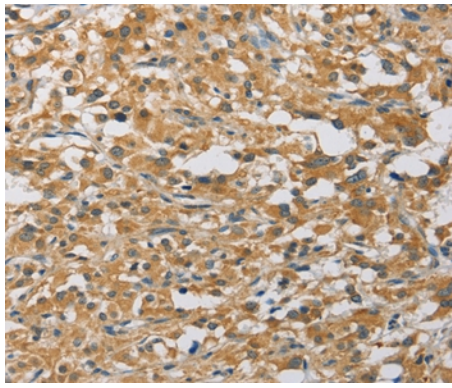
Application Details

Immunohistochemistry: 1:50-1:200

Images



Immunohistochemical analysis of paraffin-embedded Human liver cancer tissue using #36125 at dilution 1/60.



Immunohistochemical analysis of paraffin-embedded Human thyroid cancer tissue using #36125 at dilution 1/60.

Background

Major intrinsic protein is a member of the water-transporting aquaporins as well as the original member of the MIP family of channel proteins. The function of the fiber cell membrane protein encoded by this gene is undetermined, yet this protein is speculated to play a role in intracellular communication. The MIP protein is expressed in the ocular lens and is required for correct lens function. This gene has been mapped among aquaporins AQP2, AQP5, and AQP6, in a potential gene cluster at 12q13.

Note: This product is for in vitro research use only