

ARFGAP1 Antibody

Catalog No: #36127

Orders: order@signalwayantibody.com

Support: tech@signalwayantibody.com

Description

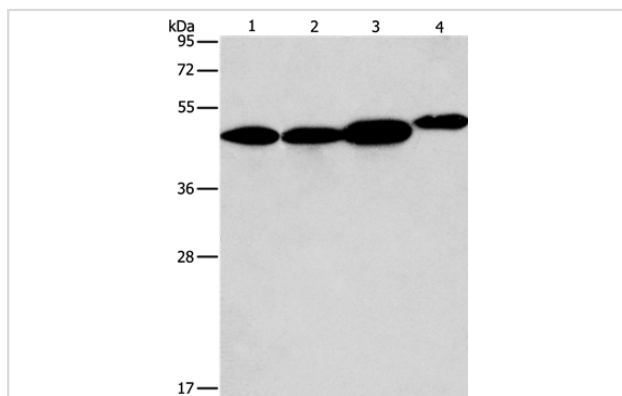
Product Name	ARFGAP1 Antibody
Host Species	Rabbit
Clonality	Polyclonal
Purification	Antigen affinity purification.
Applications	WB IHC
Species Reactivity	Hu Ms
Specificity	The antibody detects endogenous levels of total ARFGAP1 protein.
Immunogen Type	Recombinant Protein
Immunogen Description	Fusion protein corresponding to a region derived from internal residues of human ADP-ribosylation factor GTPase activating protein 1
Target Name	ARFGAP1
Other Names	ARF1GAP; HRIHFB2281
Accession No.	Swiss-Prot#: Q8N6T3NCBI Gene ID: 55738Gene Accsson: BC028233
Uniprot	Q8N6T3
GeneID	55738;
SDS-PAGE MW	45kd
Concentration	1.2mg/ml
Formulation	Rabbit IgG in pH7.4 PBS, 0.05% NaN ₃ , 40% Glycerol.
Storage	Store at -20°C

Application Details

Western blotting: 1:1000-1:5000

Immunohistochemistry: 1:25-1:100

Images



Gel: 10%SDS-PAGE

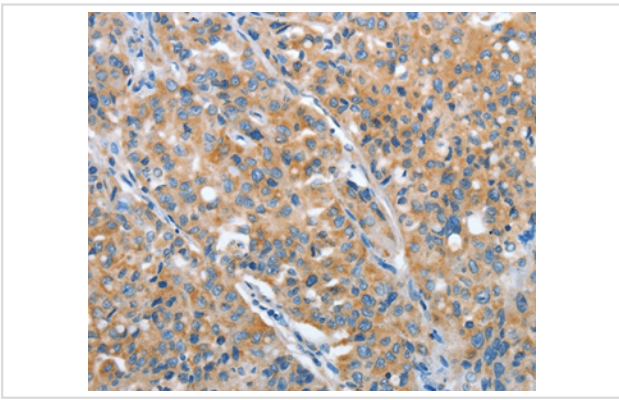
Lysates (from left to right): 293T, A549, PC3 and NIH/3T3 cell

Amount of lysate: 40ug per lane

Primary antibody: 1/600 dilution

Secondary antibody dilution: 1/8000

Exposure time: 10 seconds



Immunohistochemical analysis of paraffin-embedded Human lung cancer tissue using #36127 at dilution 1/30.

Background

The protein encoded by this gene is a GTPase-activating protein (GAP) which associates with the Golgi apparatus and which interacts with ADP-ribosylation factor 1 (ARF1). The encoded protein promotes hydrolysis of ARF1-bound GTP and is required for the dissociation of coat proteins from Golgi-derived membranes and vesicles. Dissociation of the coat proteins is required for the fusion of these vesicles with target compartments. The activity of this protein is stimulated by phosphoinositides and inhibited by phosphatidylcholine. Two transcript variants encoding different isoforms have been found for this gene.?

Note: This product is for in vitro research use only