

ARHGAP15 Antibody

Catalog No: #36131

Orders: order@signalwayantibody.com

Support: tech@signalwayantibody.com

Description

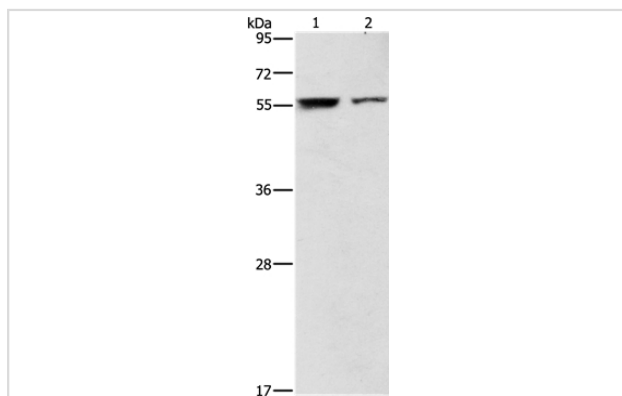
Product Name	ARHGAP15 Antibody
Host Species	Rabbit
Clonality	Polyclonal
Purification	Antigen affinity purification.
Applications	WB IHC
Species Reactivity	Hu
Specificity	The antibody detects endogenous levels of total ARHGAP15 protein.
Immunogen Type	Recombinant Protein
Immunogen Description	Fusion protein corresponding to a region derived from internal residues of human Rho GTPase activating protein 15
Target Name	ARHGAP15
Other Names	BM046
Accession No.	Swiss-Prot#: Q53QZ3NCBI Gene ID: 55843Gene Accssion: BC016701
Uniprot	Q53QZ3
GeneID	55843;
SDS-PAGE MW	55kd
Concentration	2mg/ml
Formulation	Rabbit IgG in pH7.4 PBS, 0.05% NaN ₃ , 40% Glycerol.
Storage	Store at -20°C

Application Details

Western blotting: 1:200-1:1000

Immunohistochemistry: 1:50-1:200

Images



Gel: 8%SDS-PAGE

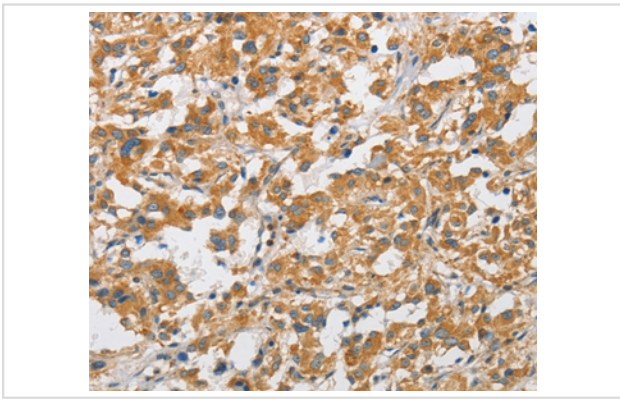
Lysates (from left to right): Jurkat and 293T cell

Amount of lysate: 40ug per lane

Primary antibody: 1/500 dilution

Secondary antibody dilution: 1/8000

Exposure time: 2 minutes



Immunohistochemical analysis of paraffin-embedded Human thyroid cancer tissue using #36131 at dilution 1/50.

Background

RHO GTPases regulate diverse biologic processes, and their activity is regulated by RHO GTPase-activating proteins (GAPs), such as ARHGAP15. ARHGAP15 is a GTPase activator for the Rho-type GTPases by converting them to an inactive GDP-bound state. Has activity toward RAC1. Overexpression results in an increase in actin stress fibers and cell contraction.

Note: This product is for in vitro research use only