

ARHGEF1 Antibody

Catalog No: #36133

Orders: order@signalwayantibody.comSupport: tech@signalwayantibody.com

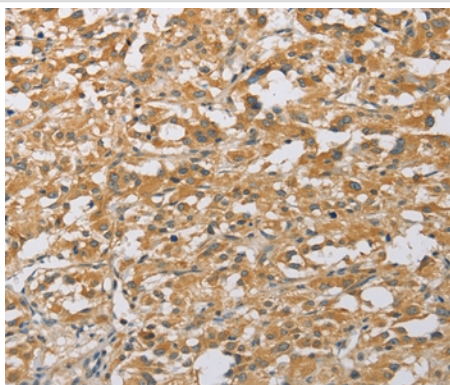
Description

Product Name	ARHGEF1 Antibody
Host Species	Rabbit
Clonality	Polyclonal
Purification	Antigen affinity purification.
Applications	IHC
Species Reactivity	Hu
Specificity	The antibody detects endogenous levels of total ARHGEF1 protein.
Immunogen Type	Recombinant Protein
Immunogen Description	Fusion protein corresponding to a region derived from internal residues of human Rho guanine nucleotide exchange factor (GEF) 1
Target Name	ARHGEF1
Other Names	LSC; GEF1; LBCL2; SUB1.5; P115-RHOGEF
Accession No.	Swiss-Prot#: Q92888NCBI Gene ID: 9138Gene Accssion: BC034013
Uniprot	Q92888
GeneID	9138;
Concentration	2.6mg/ml
Formulation	Rabbit IgG in pH7.4 PBS, 0.05% NaN ₃ , 40% Glycerol.
Storage	Store at -20°C

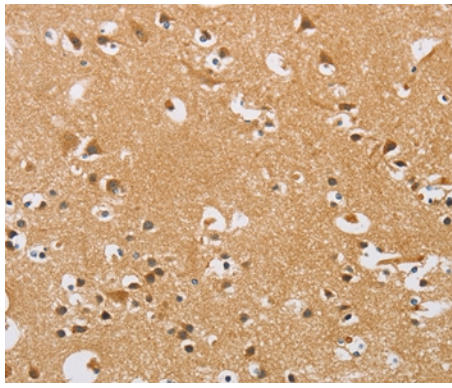
Application Details

Immunohistochemistry: 1:50-1:200

Images



Immunohistochemical analysis of paraffin-embedded Human thyroid cancer tissue using #36133 at dilution 1/50.



Immunohistochemical analysis of paraffin-embedded Human brain tissue using #36133 at dilution 1/50.

Background

Rho GTPases play a fundamental role in numerous cellular processes that are initiated by extracellular stimuli that work through G protein coupled receptors. The encoded protein may form complex with G proteins and stimulate Rho-dependent signals. Multiple alternatively spliced transcript variants have been found for this gene, but the full-length nature of some variants has not been defined.

Note: This product is for in vitro research use only