

ARHGEF3 Antibody

Catalog No: #36134

Orders: order@signalwayantibody.comSupport: tech@signalwayantibody.com

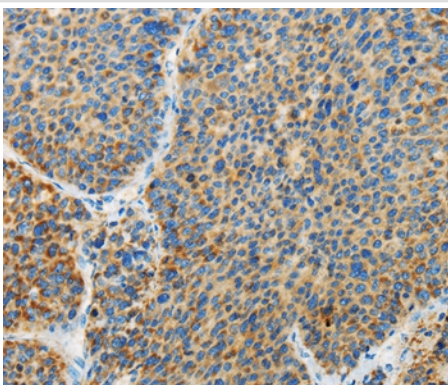
Description

Product Name	ARHGEF3 Antibody
Host Species	Rabbit
Clonality	Polyclonal
Purification	Antigen affinity purification.
Applications	IHC
Species Reactivity	Hu
Specificity	The antibody detects endogenous levels of total ARHGEF3 protein.
Immunogen Type	Recombinant Protein
Immunogen Description	Fusion protein corresponding to residues near the N terminal of human Rho guanine nucleotide exchange factor (GEF) 3
Target Name	ARHGEF3
Other Names	GEF3; STA3; XPLN
Accession No.	Swiss-Prot#: Q9NR81NCBI Gene ID: 50650Gene Accsson: BC099715
Uniprot	Q9NR81
GeneID	50650;
Concentration	0.9mg/ml
Formulation	Rabbit IgG in pH7.4 PBS, 0.05% NaN ₃ , 40% Glycerol.
Storage	Store at -20°C

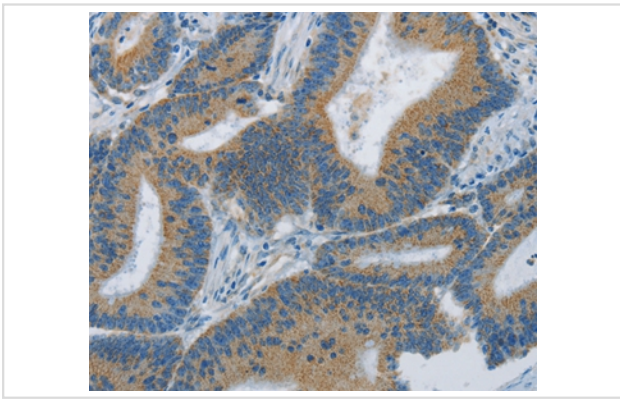
Application Details

Immunohistochemistry: 1:25-1:100

Images



Immunohistochemical analysis of paraffin-embedded Human liver cancer tissue using #36134 at dilution 1/25.



Immunohistochemical analysis of paraffin-embedded Human colon cancer tissue using #36134 at dilution 1/25.

Background

Rho-like GTPases are involved in a variety of cellular processes, and they are activated by binding GTP and inactivated by conversion of GTP to GDP by their intrinsic GTPase activity. Guanine nucleotide exchange factors (GEFs) accelerate the GTPase activity of Rho GTPases by catalyzing their release of bound GDP. This gene encodes a guanine nucleotide exchange factor, which specifically activates two members of the Rho GTPase family: RHOA and RHOB, both of which have a role in bone cell biology. It has been identified that genetic variation in this gene plays a role in the determination of bone mineral density (BMD), indicating the implication of this gene in postmenopausal osteoporosis. Alternatively spliced transcript variants encoding different isoforms have been found for this gene.

Note: This product is for in vitro research use only