

## ARL4A Antibody

Catalog No: #36137

Orders: order@signalwayantibody.com

Support: tech@signalwayantibody.com

## Description

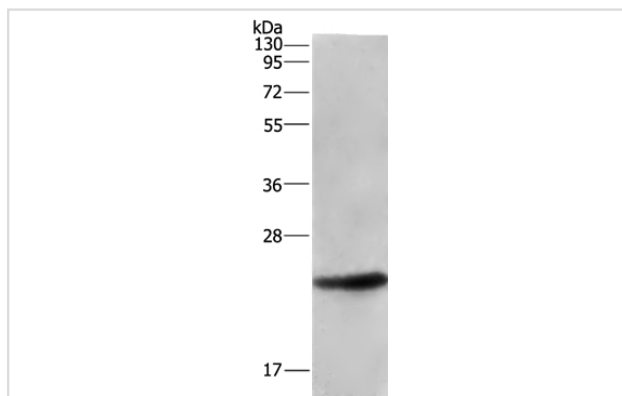
Product Name	ARL4A Antibody
Host Species	Rabbit
Clonality	Polyclonal
Purification	Antigen affinity purification.
Applications	WB IHC
Species Reactivity	Hu
Specificity	The antibody detects endogenous levels of total ARL4A protein.
Immunogen Type	Recombinant Protein
Immunogen Description	Fusion protein corresponding to residues near the N terminal of human ADP-ribosylation factor-like 4A
Target Name	ARL4A
Other Names	ARL4
Accession No.	Swiss-Prot#: P40617NCBI Gene ID: 10124Gene Accssion: BC001111
Uniprot	P40617
GeneID	10124;
SDS-PAGE MW	23kd
Concentration	2.2mg/ml
Formulation	Rabbit IgG in pH7.4 PBS, 0.05% NaN <sub>3</sub> , 40% Glycerol.
Storage	Store at -20°C

## Application Details

Western blotting: 1:200-1:1000

Immunohistochemistry: 1:50-1:200

## Images



Gel: 10%SDS-PAGE

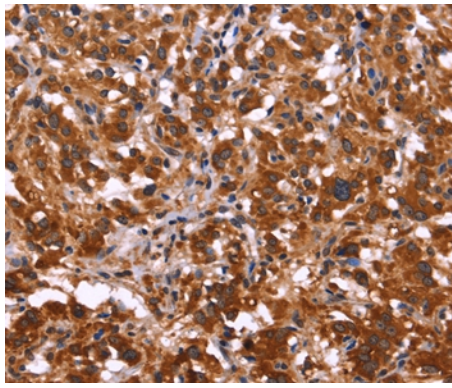
Lysates (from left to right): Human fetal liver tissue

Amount of lysate: 40ug per lane

Primary antibody: 1/533 dilution

Secondary antibody dilution: 1/8000

Exposure time: 30 seconds



Immunohistochemical analysis of paraffin-embedded Human colon cancer tissue using #36137 at dilution 1/50.

## Background

ADP-ribosylation factor-like 4A is a member of the ADP-ribosylation factor family of GTP-binding proteins. ARL4A is similar to ARL4C and ARL4D and each has a nuclear localization signal and an unusually high guanine nucleotide exchange rate. ARL4A is located in both the nuclear and extranuclear cell compartments. Multiple transcript variants encoding the same protein have been found for this gene

Note: This product is for in vitro research use only