

SPIRE2 Antibody

Catalog No: #36144

Orders: order@signalwayantibody.comSupport: tech@signalwayantibody.com

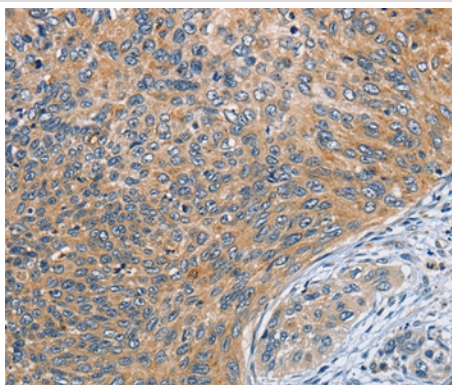
Description

Product Name	SPIRE2 Antibody
Host Species	Rabbit
Clonality	Polyclonal
Purification	Antigen affinity purification.
Applications	IHC
Species Reactivity	Hu
Specificity	The antibody detects endogenous levels of total SPIRE2 protein.
Immunogen Type	Recombinant Protein
Immunogen Description	Fusion protein corresponding to residues near the C terminal of human spire-type actin nucleation factor 2
Target Name	SPIRE2
Other Names	Spir-2
Accession No.	Swiss-Prot#: Q8WWL2NCBI Gene ID: 84501Gene Accssion: BC139732
Uniprot	Q8WWL2
GeneID	84501;
Concentration	1.2mg/ml
Formulation	Rabbit IgG in pH7.4 PBS, 0.05% NaN ₃ , 40% Glycerol.
Storage	Store at -20°C

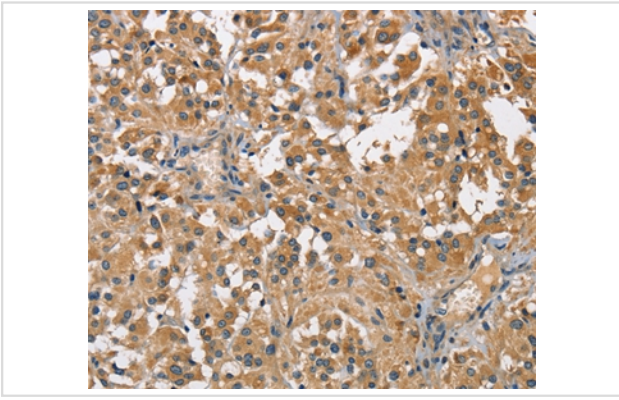
Application Details

Immunohistochemistry: 1:25-1:100

Images



Immunohistochemical analysis of paraffin-embedded Human cervical cancer tissue using #36144 at dilution 1/30.



Immunohistochemical analysis of paraffin-embedded Human thyroid cancer tissue using #36144 at dilution 1/30.

Background

SPIRE2, is a 714 amino acid protein belonging to the spire family. Acts as an actin nucleation factor, remains associated with the slow-growing pointed end of the new filament. Involved in intracellular vesicle transport along actin fibers, providing a novel link between actin cytoskeleton dynamics and intracellular transport. Required for asymmetric spindle positioning and asymmetric cell division during meiosis. Required for normal formation of the cleavage furrow and for polar body extrusion during female germ cell meiosis.

Note: This product is for in vitro research use only