

IFITM3 Antibody

Catalog No: #36149

Orders: order@signalwayantibody.com

Support: tech@signalwayantibody.com

Description

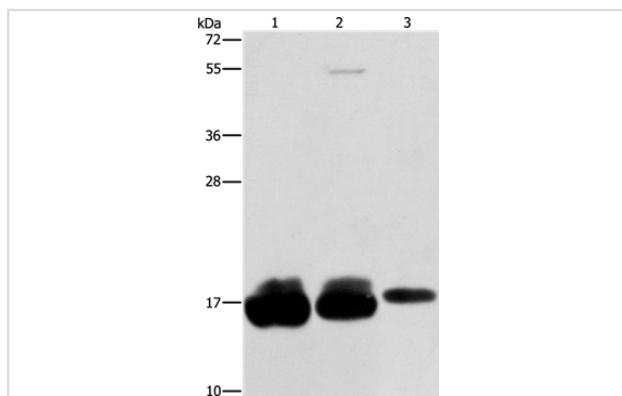
Product Name	IFITM3 Antibody
Host Species	Rabbit
Clonality	Polyclonal
Purification	Antigen affinity purification.
Applications	WB IHC
Species Reactivity	Hu
Specificity	The antibody detects endogenous levels of total IFITM3 protein.
Immunogen Type	Recombinant Protein
Immunogen Description	Fusion protein corresponding to residues near the N terminal of human interferon induced transmembrane protein 3
Target Name	IFITM3
Other Names	1-8U; IP15; DSPA2b
Accession No.	Swiss-Prot#: Q01628NCBI Gene ID: 10410Gene Accssion: BC006794
Uniprot	Q01628
GeneID	10410;
SDS-PAGE MW	15kd
Concentration	1mg/ml
Formulation	Rabbit IgG in pH7.4 PBS, 0.05% NaN ₃ , 40% Glycerol.
Storage	Store at -20°C

Application Details

Western blotting: 1:1000-1:5000

Immunohistochemistry: 1:25-1:100

Images



Gel: 12%SDS-PAGE

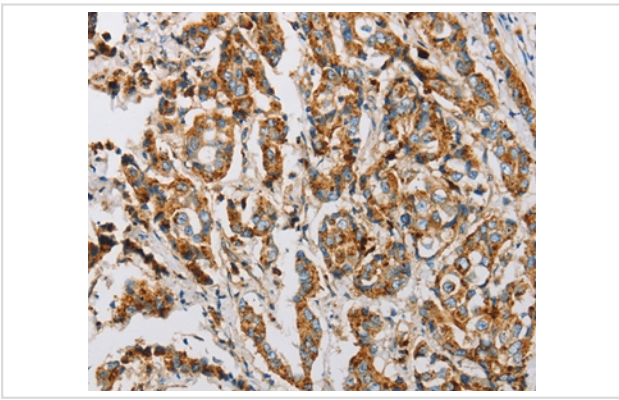
Lysates (from left to right): HeLa, hepg2 and A375 cell

Amount of lysate: 40ug per lane

Primary antibody: 1/500 dilution

Secondary antibody dilution: 1/8000

Exposure time: 10 seconds



Immunohistochemical analysis of paraffin-embedded Human breast cancer tissue using #36149 at dilution 1/25.

Background

The protein encoded by this gene is an interferon-induced membrane protein that helps confer immunity to influenza A H1N1 virus, West Nile virus, and dengue virus. Two transcript variants, only one of them protein-coding, have been found for this gene. Another variant encoding an N-terminally truncated isoform has been reported, but the full-length nature of this variant has not been determined.

Note: This product is for in vitro research use only