

SETD2 Antibody

Catalog No: #36150

Orders: order@signalwayantibody.comSupport: tech@signalwayantibody.com

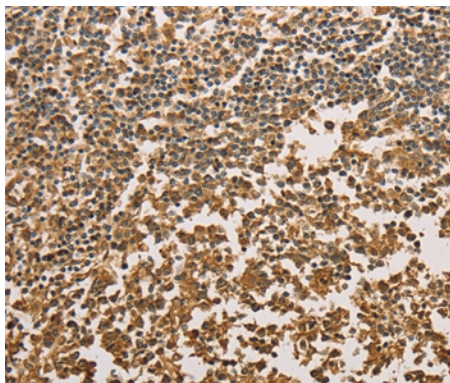
Description

Product Name	SETD2 Antibody
Host Species	Rabbit
Clonality	Polyclonal
Purification	Antigen affinity purification.
Applications	IHC
Species Reactivity	Hu
Specificity	The antibody detects endogenous levels of total SETD2 protein.
Immunogen Type	Recombinant Protein
Immunogen Description	Fusion protein corresponding to residues near the C terminal of human SET domain containing 2
Target Name	SETD2
Other Names	HYPB; SET2; HIF-1; HIP-1; KMT3A; HBP231; HSPC069; p231HBP
Accession No.	Swiss-Prot#: Q9BYW2NCBI Gene ID: 29072Gene Accssion: BC117162
Uniprot	Q9BYW2
GeneID	29072;
Concentration	1.7mg/ml
Formulation	Rabbit IgG in pH7.4 PBS, 0.05% NaN ₃ , 40% Glycerol.
Storage	Store at -20°C

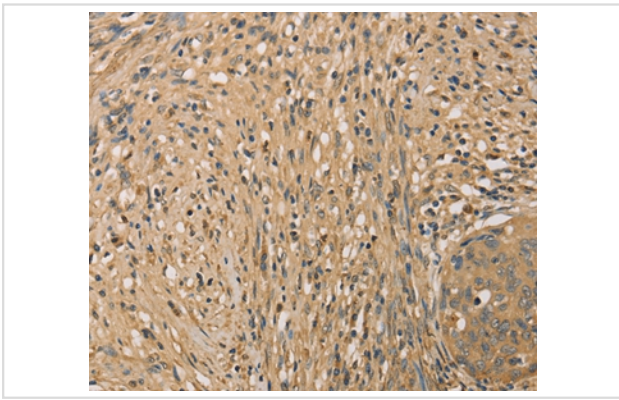
Application Details

Immunohistochemistry: 1:50-1:200

Images



Immunohistochemical analysis of paraffin-embedded Human tonsil cancer tissue using #36150 at dilution 1/40.



Immunohistochemical analysis of paraffin-embedded Human cervical cancer tissue using #36150 at dilution 1/40.

Background

Huntington's disease (HD), a neurodegenerative disorder characterized by loss of striatal neurons, is caused by an expansion of a polyglutamine tract in the HD protein huntingtin. This gene encodes a protein belonging to a class of huntingtin interacting proteins characterized by WW motifs. This protein is a histone methyltransferase that is specific for lysine-36 of histone H3, and methylation of this residue is associated with active chromatin. This protein also contains a novel transcriptional activation domain and has been found associated with hyperphosphorylated RNA polymerase II.

Note: This product is for in vitro research use only