

ART5 Antibody

Catalog No: #36155

Orders: order@signalwayantibody.comSupport: tech@signalwayantibody.com

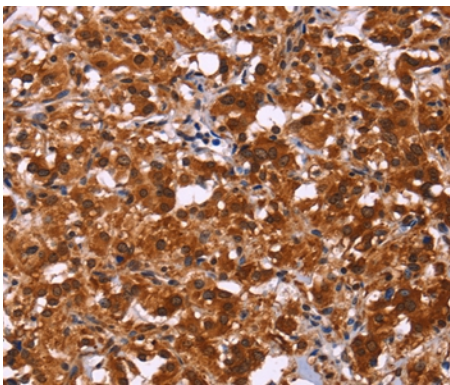
Description

Product Name	ART5 Antibody
Host Species	Rabbit
Clonality	Polyclonal
Purification	Antigen affinity purification.
Applications	IHC
Species Reactivity	Hu
Specificity	The antibody detects endogenous levels of total ART5 protein.
Immunogen Type	Recombinant Protein
Immunogen Description	Fusion protein corresponding to a region derived from internal residues of human ADP-ribosyltransferase 5
Target Name	ART5
Other Names	ARTC5
Accession No.	Swiss-Prot#: Q96L15NCBI Gene ID: 116969Gene Accssion: BC014577
Uniprot	Q96L15
GeneID	116969;
Concentration	2.3mg/ml
Formulation	Rabbit IgG in pH7.4 PBS, 0.05% NaN ₃ , 40% Glycerol.
Storage	Store at -20°C

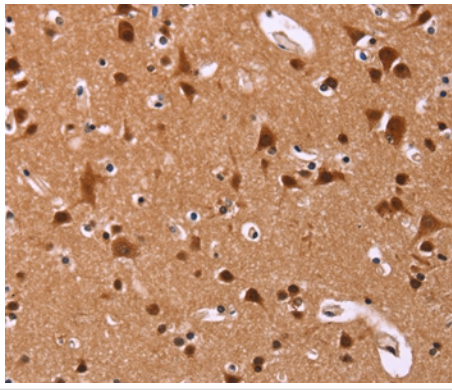
Application Details

Immunohistochemistry: 1:100-1:300

Images



Immunohistochemical analysis of paraffin-embedded Human thyroid cancer tissue using #36155 at dilution 1/50.



Immunohistochemical analysis of paraffin-embedded Human brain tissue using #36155 at dilution 1/50.

Background

The protein encoded by this gene belongs to the ARG-specific ADP-ribosyltransferase family. Proteins in this family regulate the function of target proteins by attaching ADP-ribose to specific amino acid residues in their target proteins. The mouse homolog lacks a glycosylphosphatidylinositol-anchor signal sequence and is predicted to be a secretory enzyme. Transcript variants with different 5' UTRs, but encoding the same protein have been found for this gene.

Note: This product is for in vitro research use only