

## INTS10 Antibody

Catalog No: #36159

Orders: [order@signalwayantibody.com](mailto:order@signalwayantibody.com)Support: [tech@signalwayantibody.com](mailto:tech@signalwayantibody.com)

## Description

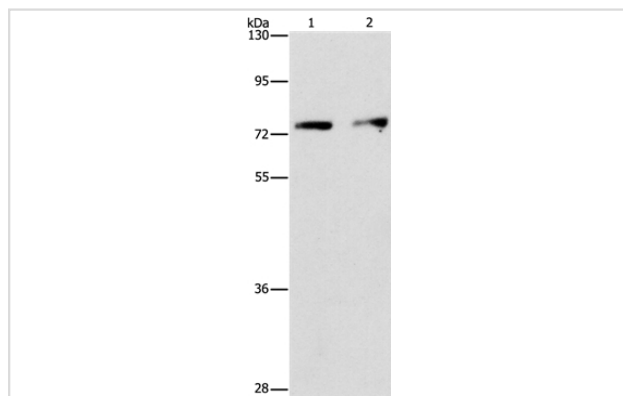
Product Name	INTS10 Antibody
Host Species	Rabbit
Clonality	Polyclonal
Purification	Antigen affinity purification.
Applications	WB IHC
Species Reactivity	Hu
Specificity	The antibody detects endogenous levels of total INTS10 protein.
Immunogen Type	Recombinant Protein
Immunogen Description	Fusion protein corresponding to residues near the C terminal of human integrator complex subunit 10
Target Name	INTS10
Other Names	INT10; C8orf35
Accession No.	Swiss-Prot#: Q9NVR2NCBI Gene ID: 55174Gene Accssion: BC001915
Uniprot	Q9NVR2
GeneID	55174;
SDS-PAGE MW	82kd
Concentration	1.9mg/ml
Formulation	Rabbit IgG in pH7.4 PBS, 0.05% NaN <sub>3</sub> , 40% Glycerol.
Storage	Store at -20°C

## Application Details

Western blotting: 1:200-1:1000

Immunohistochemistry: 1:50-1:200

## Images



Gel: 6%SDS-PAGE

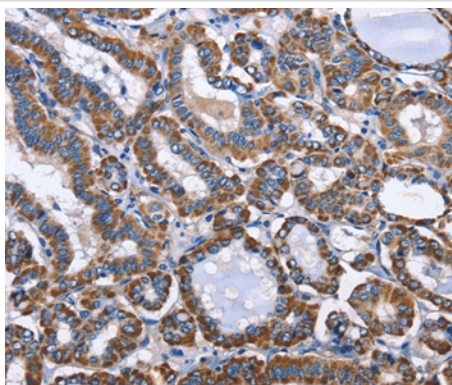
Lysates (from left to right): Hela and hepG2 cell

Amount of lysate: 40ug per lane

Primary antibody: 1/475 dilution

Secondary antibody dilution: 1/8000

Exposure time: 1 minute



Immunohistochemical analysis of paraffin-embedded Human thyroid cancer tissue using #36159 at dilution 1/50.

## Background

INTS10 is a subunit of the Integrator complex, which associates with the C-terminal domain of RNA polymerase II large subunit and mediates 3-prime end processing of small nuclear RNAs U1. INTS10 (integrator complex subunit 10) is also known as INT10 and is a 710 amino acid protein that is localized to the nucleus. INTS10 is a component of the integrator complex and, as such, is thought to aid in the regulation of 3B'B—end processing of spliceosomal U1 and U2 snRNAs.

Note: This product is for in vitro research use only