

SAE1 Antibody

Catalog No: #36160

Orders: order@signalwayantibody.com

Support: tech@signalwayantibody.com

Description

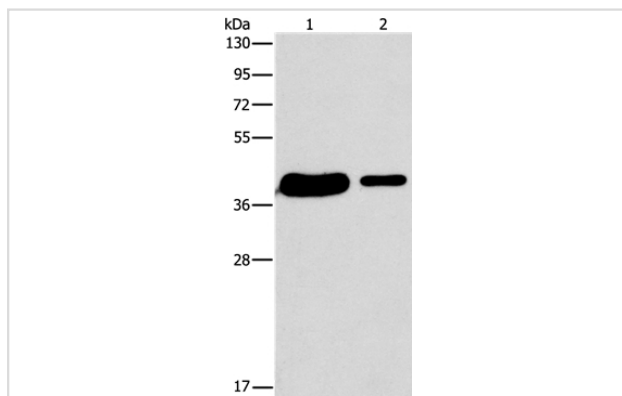
Product Name	SAE1 Antibody
Host Species	Rabbit
Clonality	Polyclonal
Purification	Antigen affinity purification.
Applications	WB IHC
Species Reactivity	Hu
Specificity	The antibody detects endogenous levels of total SAE1 protein.
Immunogen Type	Recombinant Protein
Immunogen Description	Full length fusion protein
Target Name	SAE1
Other Names	AOS1; SUA1; UBLE1A; HSPC140
Accession No.	Swiss-Prot#: Q9UBE0NCBI Gene ID: 10055Gene Accssion: BC000344
Uniprot	Q9UBE0
GeneID	10055;
SDS-PAGE MW	38kd
Concentration	0.5mg/ml
Formulation	Rabbit IgG in pH7.4 PBS, 0.05% NaN ₃ , 40% Glycerol.
Storage	Store at -20°C

Application Details

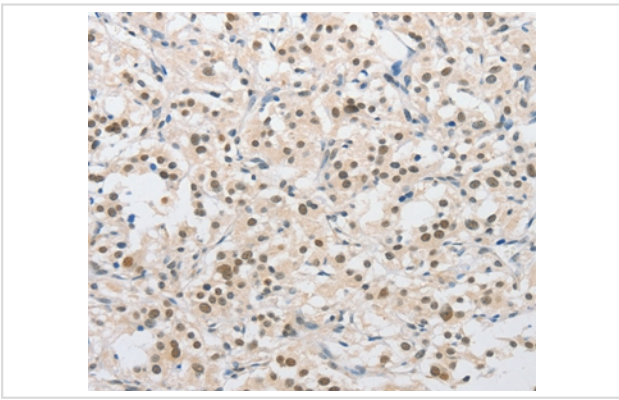
Western blotting: 1:500-1:2000

Immunohistochemistry: 1:15-1:50

Images



Gel: 15%SDS-PAGE
Lysates (from left to right): 293T and A431 cell
Amount of lysate: 40ug per lane
Primary antibody: 1/400 dilution
Secondary antibody dilution: 1/8000
Exposure time: 30 seconds



Immunohistochemical analysis of paraffin-embedded Human thyroid cancer tissue using #36160 at dilution 1/15.

Background

Posttranslational modification of proteins by the addition of the small protein SUMO, or sumoylation, regulates protein structure and intracellular localization. SAE1 and UBA2 form a heterodimer that functions as a SUMO-activating enzyme for the sumoylation of proteins.

Note: This product is for in vitro research use only