

CDH6 Antibody

Catalog No: #36162

Orders: order@signalwayantibody.com

Support: tech@signalwayantibody.com

Description

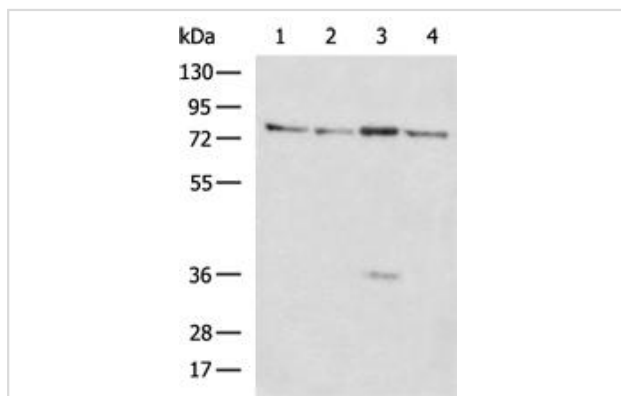
Product Name	CDH6 Antibody
Host Species	Rabbit
Clonality	Polyclonal
Purification	Antigen affinity purification.
Applications	WB IHC
Species Reactivity	Human, Mouse, Rat
Specificity	The antibody detects endogenous levels of total CDH6 protein.
Immunogen Type	Recombinant Protein
Immunogen Description	Fusion protein corresponding to a region derived from internal residues of human cadherin 6, type 2, K-cadherin (fetal kidney)
Target Name	CDH6
Other Names	CAD6; KCAD
Accession No.	Swiss-Prot#: P55285NCBI Gene ID: 1004Gene Accssion: BC000019
Uniprot	P55285
GeneID	1004;
SDS-PAGE MW	88kd
Concentration	0.8 mg/ml
Formulation	Rabbit IgG in pH7.4 PBS, 0.05% NaN ₃ , 40% Glycerol.
Storage	Store at -20°C

Application Details

Western blotting: 1:500-1:2000

Immunohistochemistry: 1:50-1:200

Images



Gel: 8%SDS-PAGE

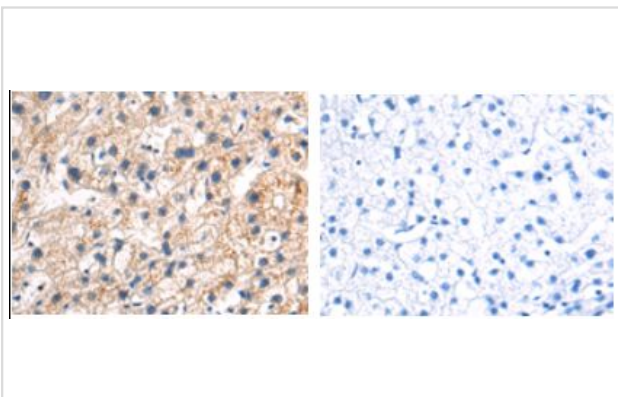
Lysate: 40 μ g

Lane 1-4: A549, HT-29 cell, Mouse liver tissue, LOVO cell lysates

Primary antibody: CDH6 Antibody at dilution 1/800

Secondary antibody: Goat anti rabbit IgG at 1/5000 dilution

Exposure time: 10 seconds



The image on the left is immunohistochemistry of paraffin-embedded Human liver cancer tissue using CDH6 Antibody at dilution 1/55, on the right is treated with fusion protein. (Original magnification: $\times 200$)

Background

This gene encodes a member of the cadherin superfamily. Cadherins are membrane glycoproteins that mediate homophilic cell-cell adhesion and play critical roles in cell differentiation and morphogenesis. The encoded protein is a type II cadherin and may play a role in kidney development as well as endometrium and placenta formation. Decreased expression of this gene may be associated with tumor growth and metastasis.

Note: This product is for in vitro research use only