

TLR5 Antibody

Catalog No: #36165

Orders: order@signalwayantibody.comSupport: tech@signalwayantibody.com

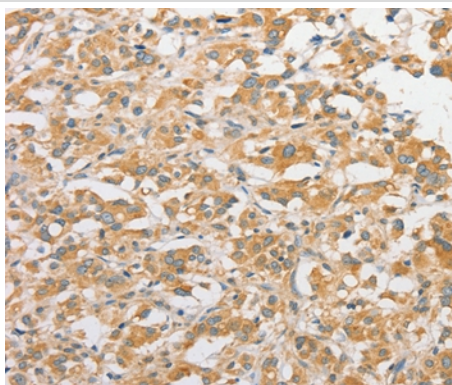
Description

Product Name	TLR5 Antibody
Host Species	Rabbit
Clonality	Polyclonal
Purification	Antigen affinity purification.
Applications	IHC
Species Reactivity	Hu
Specificity	The antibody detects endogenous levels of total TLR5 protein.
Immunogen Type	Recombinant Protein
Immunogen Description	Fusion protein corresponding to residues near the N terminal of human toll-like receptor 5
Target Name	TLR5
Other Names	TIL3; SLEB1
Accession No.	Swiss-Prot#: O60602NCBI Gene ID: 7100Gene Accssion: BC109119
Uniprot	O60602
GeneID	7100;
Concentration	1.4mg/ml
Formulation	Rabbit IgG in pH7.4 PBS, 0.05% NaN ₃ , 40% Glycerol.
Storage	Store at -20°C

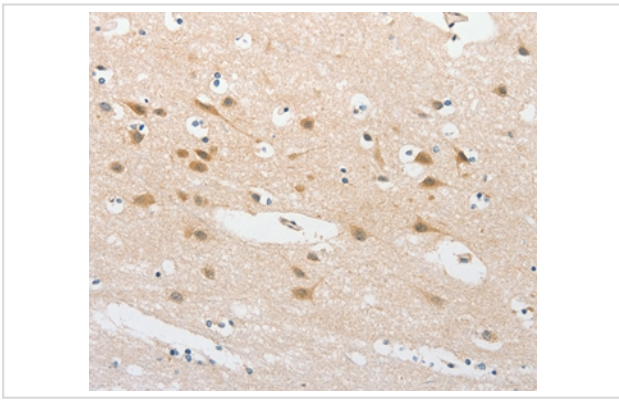
Application Details

Immunohistochemistry: 1:50-1:200

Images



Immunohistochemical analysis of paraffin-embedded Human thyroid cancer tissue using #36165 at dilution 1/30.



Immunohistochemical analysis of paraffin-embedded Human brain tissue using #36165 at dilution 1/30.

Background

This gene encodes a member of the toll-like receptor (TLR) family, which plays a fundamental role in pathogen recognition and activation of innate immune responses. These receptors recognize distinct pathogen-associated molecular patterns that are expressed on infectious agents. The protein encoded by this gene recognizes bacterial flagellin, the principal component of bacterial flagella and a virulence factor. The activation of this receptor mobilizes the nuclear factor NF-kappaB, which in turn activates a host of inflammatory-related target genes. Mutations in this gene have been associated with both resistance and susceptibility to systemic lupus erythematosus, and susceptibility to Legionnaire disease.

Note: This product is for in vitro research use only