

## RPL26L1 Antibody

Catalog No: #36167

Orders: [order@signalwayantibody.com](mailto:order@signalwayantibody.com)Support: [tech@signalwayantibody.com](mailto:tech@signalwayantibody.com)

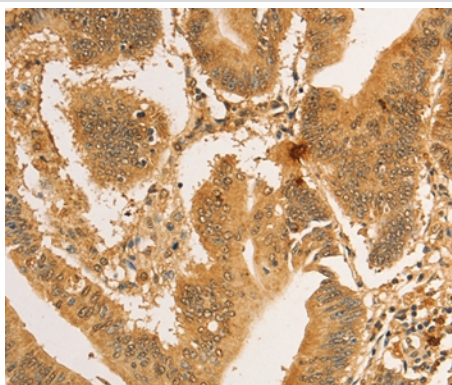
## Description

Product Name	RPL26L1 Antibody
Host Species	Rabbit
Clonality	Polyclonal
Purification	Antigen affinity purification.
Applications	IHC
Species Reactivity	Hu
Specificity	The antibody detects endogenous levels of total RPL26L1 protein.
Immunogen Type	Recombinant Protein
Immunogen Description	Full length fusion protein
Target Name	RPL26L1
Other Names	RPL26P1
Accession No.	Swiss-Prot#: Q9UNX3NCBI Gene ID: 51121Gene Accssion: BC017360
Uniprot	Q9UNX3
GeneID	51121;
Concentration	1.2mg/ml
Formulation	Rabbit IgG in pH7.4 PBS, 0.05% NaN <sub>3</sub> , 40% Glycerol.
Storage	Store at -20°C

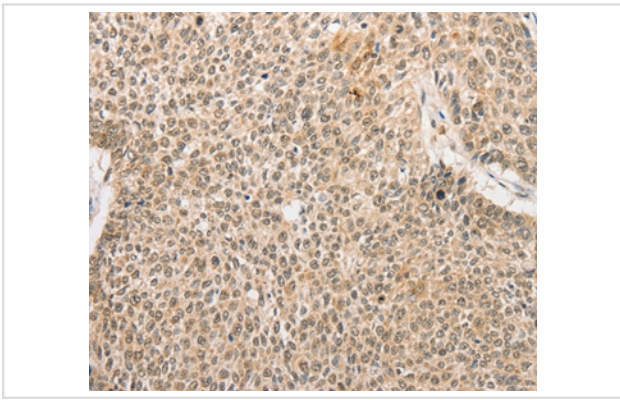
## Application Details

Immunohistochemistry: 1:50-1:200

## Images



Immunohistochemical analysis of paraffin-embedded Human colon cancer tissue using #36167 at dilution 1/30.



Immunohistochemical analysis of paraffin-embedded Human lung cancer tissue using #36167 at dilution 1/30.

## Background

This gene encodes a protein that shares high sequence similarity with ribosomal protein L26. It is not currently known whether the encoded protein is a functional ribosomal protein or whether it has evolved a function that is independent of the ribosome. Transcript variants utilizing alternative polyA signals exist.

Note: This product is for in vitro research use only