

UCHL5 Antibody

Catalog No: #36168

Orders: order@signalwayantibody.comSupport: tech@signalwayantibody.com

Description

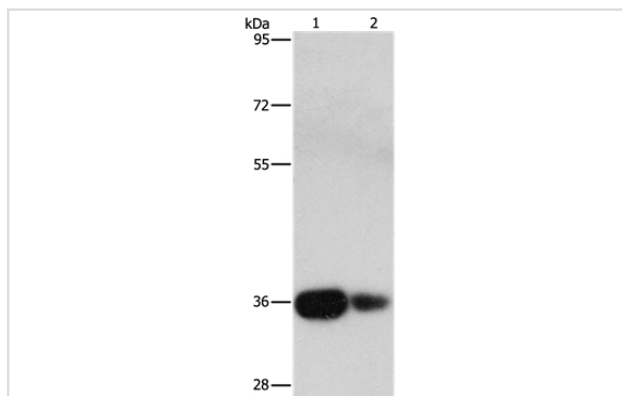
Product Name	UCHL5 Antibody
Host Species	Rabbit
Clonality	Polyclonal
Purification	Antigen affinity purification.
Applications	WB IHC
Species Reactivity	Hu
Specificity	The antibody detects endogenous levels of total UCHL5 protein.
Immunogen Type	Recombinant Protein
Immunogen Description	Full length fusion protein
Target Name	UCHL5
Other Names	UCH37; CGI-70; INO80R; UCH-L5
Accession No.	Swiss-Prot#: Q9Y5K5NCBI Gene ID: 51377Gene Accssion: BC025369
Uniprot	Q9Y5K5
GeneID	51377;
SDS-PAGE MW	37kd
Concentration	1mg/ml
Formulation	Rabbit IgG in pH7.4 PBS, 0.05% NaN ₃ , 40% Glycerol.
Storage	Store at -20°C

Application Details

Western blotting: 1:200-1:1000

Immunohistochemistry: 1:25-1:100

Images



Gel: 12%SDS-PAGE

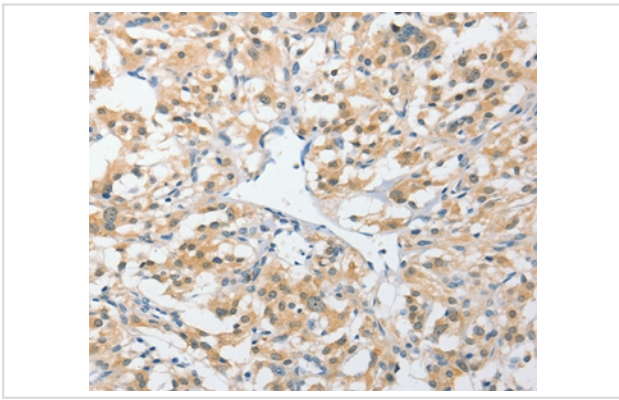
Lysates (from left to right): Human fetal kidney tissue and 293T cell

Amount of lysate: 40ug per lane

Primary antibody: 1/250 dilution

Secondary antibody dilution: 1/8000

Exposure time: 15 seconds



Immunohistochemical analysis of paraffin-embedded Human thyroid cancer tissue using #36168 at dilution 1/25.

Background

Ubiquitin carboxyl-terminal hydrolase isozyme L5 is an enzyme that in humans is encoded by the UCHL5 gene. Protease that specifically cleaves 'Lys-48'-linked polyubiquitin chains. Deubiquitinating enzyme associated with the 19S regulatory subunit of the 26S proteasome. Putative regulatory component of the INO80 complex; however is inactive in the INO80 complex and is activated by a transient interaction of the INO80 complex with the proteasome via ADRM1.

Note: This product is for in vitro research use only