

## EPS15L1 Antibody

Catalog No: #36170

Orders: [order@signalwayantibody.com](mailto:order@signalwayantibody.com)Support: [tech@signalwayantibody.com](mailto:tech@signalwayantibody.com)

## Description

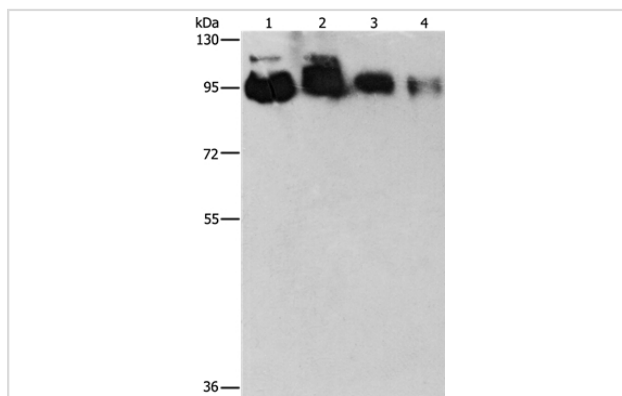
Product Name	EPS15L1 Antibody
Host Species	Rabbit
Clonality	Polyclonal
Purification	Antigen affinity purification.
Applications	WB IHC
Species Reactivity	Hu
Specificity	The antibody detects endogenous levels of total EPS15L1 protein.
Immunogen Type	Recombinant Protein
Immunogen Description	Fusion protein corresponding to residues near the C terminal of human epidermal growth factor receptor pathway substrate 15-like 1
Target Name	EPS15L1
Other Names	EPS15R
Accession No.	Swiss-Prot#: Q9UBC2NCBI Gene ID: 58513Gene Accssion: BC131590
Uniprot	Q9UBC2
GeneID	58513;
SDS-PAGE MW	94kd
Concentration	1.4mg/ml
Formulation	Rabbit IgG in pH7.4 PBS, 0.05% NaN <sub>3</sub> , 40% Glycerol.
Storage	Store at -20°C

## Application Details

Western blotting: 1:500-1:2000

Immunohistochemistry: 1:25-1:100

## Images



Gel: 8%SDS-PAGE

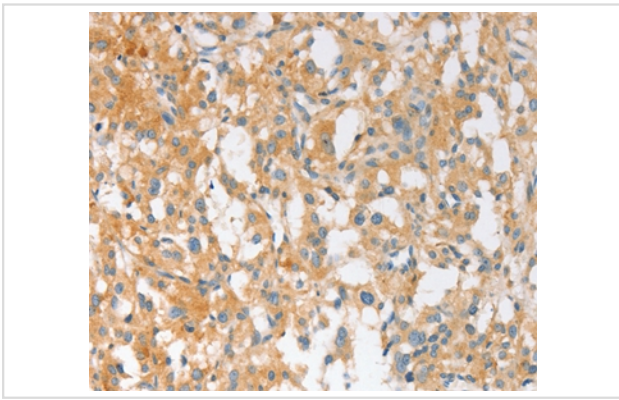
Lysates (from left to right): HeLa, PC3, 231 and 293T cell

Amount of lysate: 40ug per lane

Primary antibody: 1/350 dilution

Secondary antibody dilution: 1/8000

Exposure time: 30 seconds



Immunohistochemical analysis of paraffin-embedded Human thyroid cancer tissue using #36170 at dilution 1/30.

## Background

Epidermal growth factor receptor substrate 15-like 1 is a protein that in humans is encoded by the *EPS15L1* gene. Seems to be a constitutive component of clathrin-coated pits that is required for receptor-mediated endocytosis. Involved in endocytosis of integrin beta-1 (ITGB1) and transferrin receptor (TFR); internalization of ITGB1 as DAB2-dependent cargo but not TFR seems to require association with DAB2. Interacts with EPS15, AGFG1/HRB and AGFG2/HRBL. Associates with the clathrin-associated adapter protein complex 2 (AP-2) by similarity. Interacts with FCHO1. Interacts with FCHO2. Interacts (via EH domains) with DAB2.

Note: This product is for in vitro research use only