

STAM Antibody

Catalog No: #36172

Orders: order@signalwayantibody.comSupport: tech@signalwayantibody.com

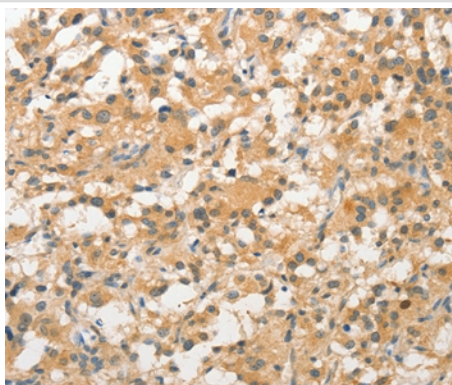
Description

Product Name	STAM Antibody
Host Species	Rabbit
Clonality	Polyclonal
Purification	Antigen affinity purification.
Applications	IHC
Species Reactivity	Hu
Specificity	The antibody detects endogenous levels of total STAM protein.
Immunogen Type	Recombinant Protein
Immunogen Description	Fusion protein corresponding to residues near the C terminal of human signal transducing adaptor molecule (SH3 domain and ITAM motif) 1
Target Name	STAM
Other Names	STAM1; STAM-1
Accession No.	Swiss-Prot#: Q92783NCBI Gene ID: 8027Gene Accssion: BC030586
Uniprot	Q92783
GeneID	8027;
Concentration	1.5mg/ml
Formulation	Rabbit IgG in pH7.4 PBS, 0.05% NaN ₃ , 40% Glycerol.
Storage	Store at -20°C

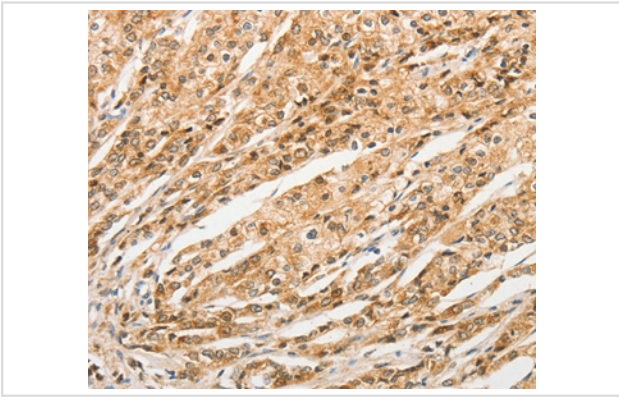
Application Details

Immunohistochemistry: 1:50-1:200

Images



Immunohistochemical analysis of paraffin-embedded Human thyroid cancer tissue using #36172 at dilution 1/40.



Immunohistochemical analysis of paraffin-embedded Human prostate cancer tissue using #36172 at dilution 1/40.

Background

This gene encodes a member of the signal-transducing adaptor molecule family. These proteins mediate downstream signaling of cytokine receptors and also play a role in ER to Golgi trafficking by interacting with the coat protein II complex. The encoded protein also associates with hepatocyte growth factor-regulated substrate to form the endosomal sorting complex required for transport-0 (ESCRT-0), which sorts ubiquitinated membrane proteins to the ESCRT-1 complex for lysosomal degradation. Alternatively spliced transcript variants have been observed for this gene.

Note: This product is for in vitro research use only