

SPTLC1 Antibody

Catalog No: #36175

Orders: order@signalwayantibody.com

Support: tech@signalwayantibody.com

Description

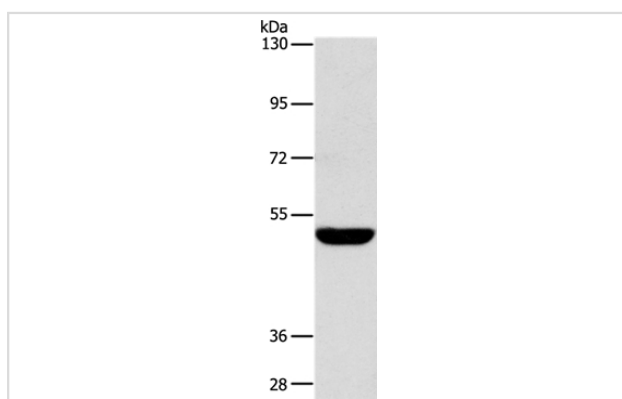
Product Name	SPTLC1 Antibody
Host Species	Rabbit
Clonality	Polyclonal
Purification	Antigen affinity purification.
Applications	WB IHC
Species Reactivity	Hu
Specificity	The antibody detects endogenous levels of total SPTLC1 protein.
Immunogen Type	Recombinant Protein
Immunogen Description	Fusion protein corresponding to residues near the C terminal of human serine palmitoyltransferase, long chain base subunit 1
Target Name	SPTLC1
Other Names	HSN1; LBC1; LCB1; SPT1; SPTI; HSN1
Accession No.	Swiss-Prot#: O15269NCBI Gene ID: 10558Gene Accssion: BC068537
Uniprot	O15269
GeneID	10558;
SDS-PAGE MW	53kd
Concentration	0.1 mg/ml
Formulation	Rabbit IgG in pH7.4 PBS, 0.05% NaN ₃ , 40% Glycerol.
Storage	Store at -20°C

Application Details

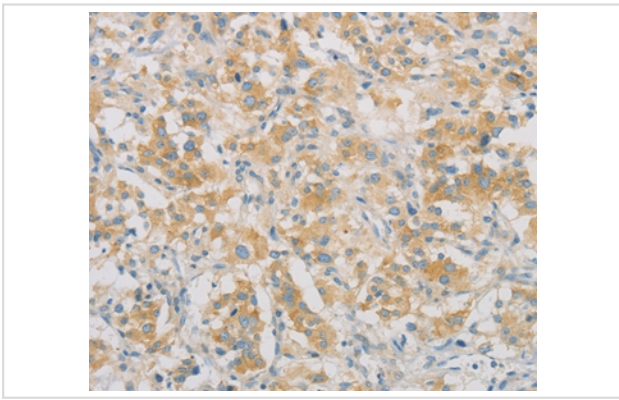
Western blotting: 1:200-1:1000

Immunohistochemistry: 1:25-1:100

Images



Gel: 10%SDS-PAGE
 Lysate: 40ug Lovo cell
 Primary antibody: 1/250 dilution
 Secondary antibody dilution: 1/8000
 Exposure time: 30 seconds



Immunohistochemical analysis of paraffin-embedded Human thyroid cancer tissue using #36175 at dilution 1/25.

Background

This gene encodes a member of the class-II pyridoxal-phosphate-dependent aminotransferase family. The encoded protein is the long chain base subunit 1 of serine palmitoyltransferase. Serine palmitoyltransferase converts L-serine and palmitoyl-CoA to 3-oxosphinganine with pyridoxal 5'-phosphate and is the key enzyme in sphingolipid biosynthesis. Mutations in this gene were identified in patients with hereditary sensory neuropathy type 1. Alternatively spliced variants encoding different isoforms have been identified. Pseudogenes of this gene have been defined on chromosomes 1, 6, 10, and 13.

Note: This product is for in vitro research use only