

OLFM1 Antibody

Catalog No: #36178

Orders: order@signalwayantibody.comSupport: tech@signalwayantibody.com

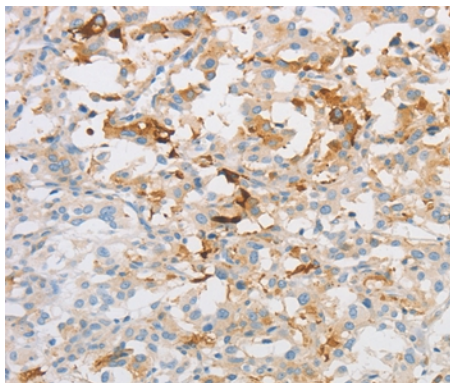
Description

| | |
|-----------------------|---|
| Product Name | OLFM1 Antibody |
| Host Species | Rabbit |
| Clonality | Polyclonal |
| Purification | Antigen affinity purification. |
| Applications | IHC |
| Species Reactivity | Hu |
| Specificity | The antibody detects endogenous levels of total OLFM1 protein. |
| Immunogen Type | Recombinant Protein |
| Immunogen Description | Fusion protein corresponding to a region derived from internal residues of human olfactomedin 1 |
| Target Name | OLFM1 |
| Other Names | AMY; NOE1; OlfA; NOELIN1 |
| Accession No. | Swiss-Prot#: Q99784NCBI Gene ID: 10439Gene Accssion: BC008763 |
| Uniprot | Q99784 |
| GeneID | 10439; |
| Concentration | 1.4mg/ml |
| Formulation | Rabbit IgG in pH7.4 PBS, 0.05% NaN ₃ , 40% Glycerol. |
| Storage | Store at -20°C |

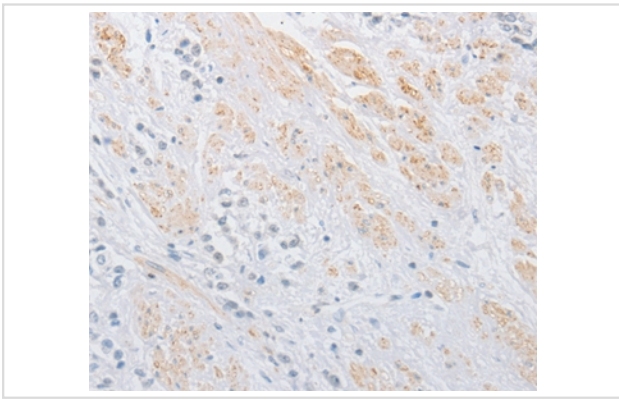
Application Details

Immunohistochemistry: 1:25-1:100

Images



Immunohistochemical analysis of paraffin-embedded Human thyroid cancer tissue using #36178 at dilution 1/30.



Immunohistochemical analysis of paraffin-embedded Human prostate cancer tissue using #36178 at dilution 1/30.

Background

This gene product shares extensive sequence similarity with the rat neuronal olfactomedin-related ER localized protein. While the exact function of the encoded protein is not known, its abundant expression in brain suggests that it may have an essential role in nerve tissue. Several alternatively spliced transcripts encoding different isoforms have been found for this gene.

Note: This product is for in vitro research use only