

## NAT8 Antibody

Catalog No: #36180

Orders: order@signalwayantibody.com

Support: tech@signalwayantibody.com

## Description

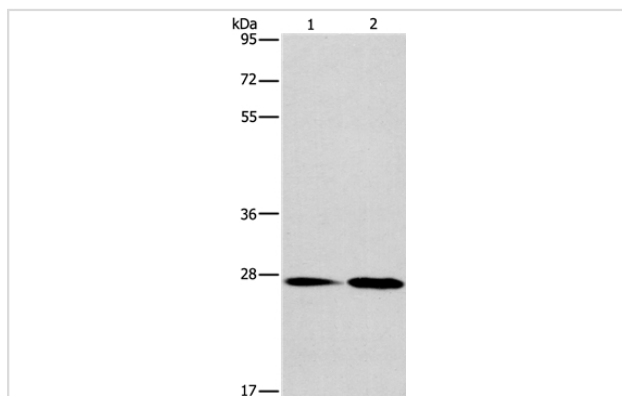
Product Name	NAT8 Antibody
Host Species	Rabbit
Clonality	Polyclonal
Purification	Antigen affinity purification.
Applications	WB IHC
Species Reactivity	Hu Ms
Specificity	The antibody detects endogenous levels of total NAT8 protein.
Immunogen Type	Recombinant Protein
Immunogen Description	Fusion protein corresponding to a region derived from internal residues of human N-acetyltransferase 8 (GCN5-related, putative)
Target Name	NAT8
Other Names	GLA; CML1; Hcm1; ATase2; TSC501; TSC510
Accession No.	Swiss-Prot#: Q9UHE5NCBI Gene ID: 9027Gene Accssion: BC012626
Uniprot	Q9UHE5
GeneID	9027;
SDS-PAGE MW	26kd
Concentration	1.9mg/ml
Formulation	Rabbit IgG in pH7.4 PBS, 0.05% NaN <sub>3</sub> , 40% Glycerol.
Storage	Store at -20°C

## Application Details

Western blotting: 1:200-1:1000

Immunohistochemistry: 1:50-1:200

## Images



Gel: 8%SDS-PAGE

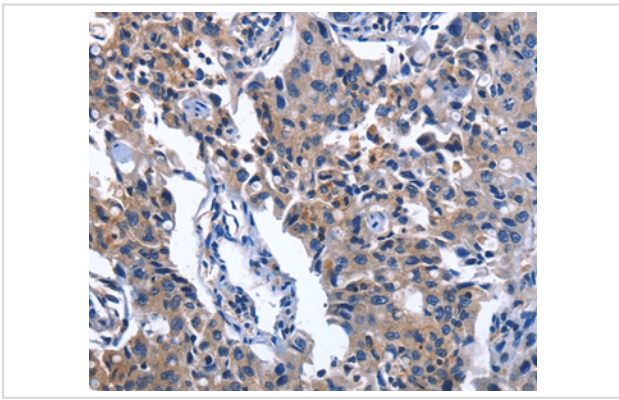
Lysates (from left to right): Mouse kidney and liver tissue

Amount of lysate: 40ug per lane

Primary antibody: 1/237.5 dilution

Secondary antibody dilution: 1/8000

Exposure time: 20 seconds



Immunohistochemical analysis of paraffin-embedded Human cervical cancer tissue using #36180 at dilution 1/50.

## Background

This gene, isolated using the differential display method to detect tissue-specific genes, is specifically expressed in kidney and liver. The encoded protein shows amino acid sequence similarity to N-acetyltransferases. A similar protein in *Xenopus* affects cell adhesion and gastrulation movements, and may be localized in the secretory pathway. A highly similar paralog is found in a cluster with this gene.?

Note: This product is for in vitro research use only