

ZWINT Antibody

Catalog No: #36183

Orders: order@signalwayantibody.comSupport: tech@signalwayantibody.com

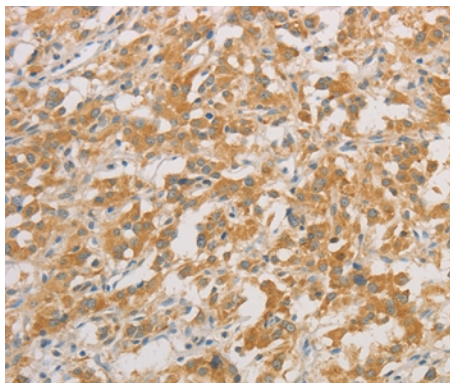
Description

Product Name	ZWINT Antibody
Host Species	Rabbit
Clonality	Polyclonal
Purification	Antigen affinity purification.
Applications	IHC
Species Reactivity	Hu
Specificity	The antibody detects endogenous levels of total ZWINT protein.
Immunogen Type	Recombinant Protein
Immunogen Description	Full length fusion protein
Target Name	ZWINT
Other Names	ZWINT1; KNTC2AP; HZwint-1
Accession No.	Swiss-Prot#: O95229NCBI Gene ID: 11130Gene Accsson: BC020979
Uniprot	O95229
GeneID	11130;
Concentration	2mg/ml
Formulation	Rabbit IgG in pH7.4 PBS, 0.05% NaN ₃ , 40% Glycerol.
Storage	Store at -20°C

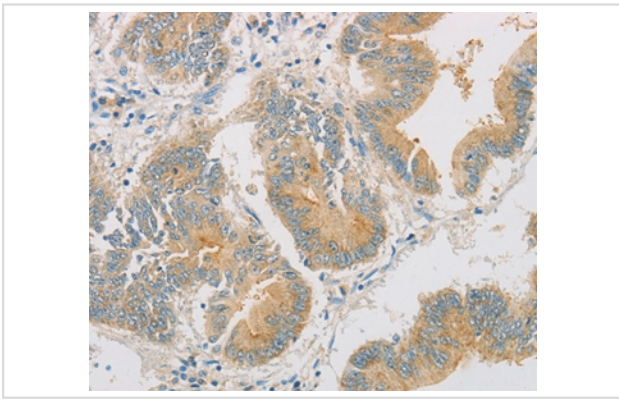
Application Details

Immunohistochemistry: 1:50-1:200

Images



Immunohistochemical analysis of paraffin-embedded Human thyroid cancer tissue using #36183 at dilution 1/50.



Immunohistochemical analysis of paraffin-embedded Human colon cancer tissue using #36183 at dilution 1/50.

Background

This gene encodes a protein that is clearly involved in kinetochore function although an exact role is not known. It interacts with ZW10, another kinetochore protein, possibly regulating the association between ZW10 and kinetochores. The encoded protein localizes to prophase kinetochores before ZW10 does and it remains detectable on the kinetochore until late anaphase. It has a uniform distribution in the cytoplasm of interphase cells. Alternatively spliced transcript variants encoding different isoforms have been found for this gene.?

Note: This product is for in vitro research use only