

PITX2 Antibody

Catalog No: #36185

Orders: order@signalwayantibody.comSupport: tech@signalwayantibody.com

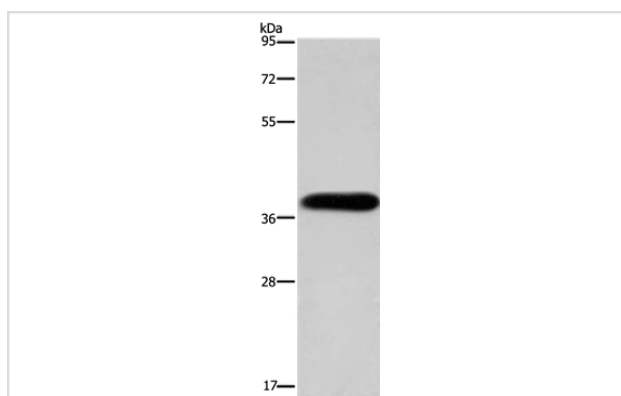
Description

Product Name	PITX2 Antibody
Host Species	Rabbit
Clonality	Polyclonal
Purification	Antigen affinity purification.
Applications	WB
Species Reactivity	Hu
Specificity	The antibody detects endogenous levels of total PITX2 protein.
Immunogen Type	Recombinant Protein
Immunogen Description	Fusion protein corresponding to residues near the N terminal of human paired-like homeodomain 2
Target Name	PITX2
Other Names	RS; RGS; ARP1; Brx1; IDG2; IGDS; IHG2; PTX2; RIEG; IGDS2; IRID2; Otlx2; RIEG1
Accession No.	Swiss-Prot#: Q99697NCBI Gene ID: 5308Gene Accssion: BC013998
Uniprot	Q99697
GeneID	5308;
SDS-PAGE MW	35kd
Concentration	0.8mg/ml
Formulation	Rabbit IgG in pH7.4 PBS, 0.05% NaN ₃ , 40% Glycerol.
Storage	Store at -20°C

Application Details

Western blotting: 1:500-1:2000

Images



Gel: 8%SDS-PAGE
 Lysate: 40ug HepG2 cell
 Primary antibody: 1/200 dilution
 Secondary antibody dilution: 1/8000
 Exposure time: 40 seconds

Background

This gene encodes a member of the RIEG/PITX homeobox family, which is in the bicoid class of homeodomain proteins. The encoded protein acts as a transcription factor and regulates procollagen lysyl hydroxylase gene expression. This protein plays a role in the terminal differentiation of

somatotroph and lactotroph cell phenotypes, is involved in the development of the eye, tooth and abdominal organs, and acts as a transcriptional regulator involved in basal and hormone-regulated activity of prolactin. Mutations in this gene are associated with Axenfeld-Rieger syndrome, iridogoniodysgenesis syndrome, and sporadic cases of Peters anomaly. A similar protein in other vertebrates is involved in the determination of left-right asymmetry during development. Alternatively spliced transcript variants encoding distinct isoforms have been described.

Note: This product is for in vitro research use only