

LATS1 Antibody

Catalog No: #36187

Orders: order@signalwayantibody.comSupport: tech@signalwayantibody.com

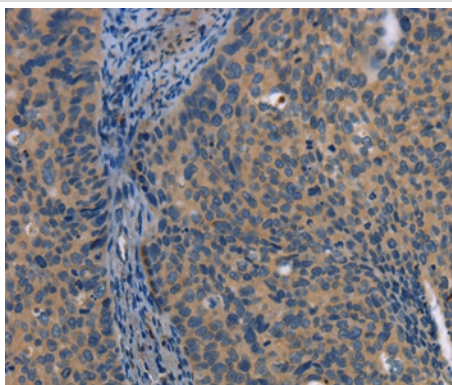
Description

Product Name	LATS1 Antibody
Host Species	Rabbit
Clonality	Polyclonal
Purification	Antigen affinity purification.
Applications	IHC
Species Reactivity	Hu
Specificity	The antibody detects endogenous levels of total LATS1 protein.
Immunogen Type	Recombinant Protein
Immunogen Description	Full length fusion protein
Target Name	LATS1
Other Names	wt5; WARTS
Accession No.	Swiss-Prot#: O95835NCBI Gene ID: 9113Gene Accssion: BC015665
Uniprot	O95835
GeneID	9113;
Concentration	1.2mg/ml
Formulation	Rabbit IgG in pH7.4 PBS, 0.05% NaN ₃ , 40% Glycerol.
Storage	Store at -20°C

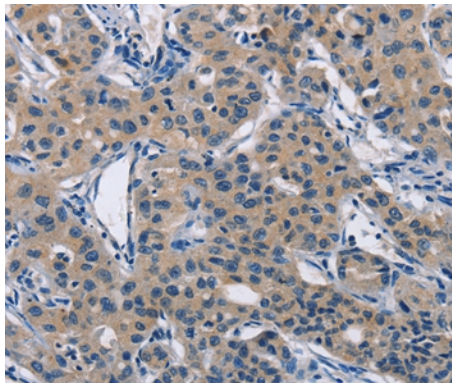
Application Details

Immunohistochemistry: 1:25-1:100

Images



Immunohistochemical analysis of paraffin-embedded Human cervical cancer tissue using #36187 at dilution 1/25.



Immunohistochemical analysis of paraffin-embedded Human lung cancer tissue using #36187 at dilution 1/25.

Background

The protein encoded by this gene is a putative serine/threonine kinase that localizes to the mitotic apparatus and complexes with cell cycle controller CDC2 kinase in early mitosis. The protein is phosphorylated in a cell-cycle dependent manner, with late prophase phosphorylation remaining through metaphase. The N-terminal region of the protein binds CDC2 to form a complex showing reduced H1 histone kinase activity, indicating a role as a negative regulator of CDC2/cyclin A. In addition, the C-terminal kinase domain binds to its own N-terminal region, suggesting potential negative regulation through interference with complex formation via intramolecular binding. Biochemical and genetic data suggest a role as a tumor suppressor. This is supported by studies in knockout mice showing development of soft-tissue sarcomas, ovarian stromal cell tumors and a high sensitivity to carcinogenic treatments.

Note: This product is for in vitro research use only