

PRPSAP1 Antibody

Catalog No: #36188

Orders: order@signalwayantibody.comSupport: tech@signalwayantibody.com

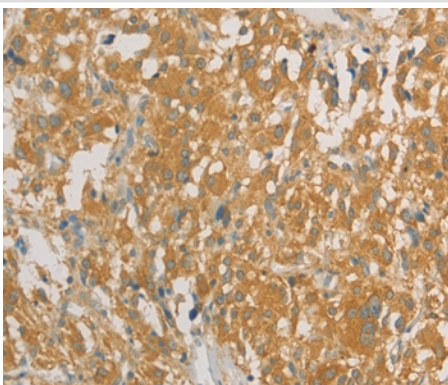
Description

| | |
|-----------------------|--|
| Product Name | PRPSAP1 Antibody |
| Host Species | Rabbit |
| Clonality | Polyclonal |
| Purification | Antigen affinity purification. |
| Applications | IHC |
| Species Reactivity | Hu |
| Specificity | The antibody detects endogenous levels of total PRPSAP1 protein. |
| Immunogen Type | Recombinant Protein |
| Immunogen Description | Fusion protein corresponding to residues near the C terminal of human phosphoribosyl pyrophosphate synthetase-associated protein 1 |
| Target Name | PRPSAP1 |
| Other Names | PAP39 |
| Accession No. | Swiss-Prot#: Q14558NCBI Gene ID: 5635Gene Accssion: BC009012 |
| Uniprot | Q14558 |
| GeneID | 5635; |
| Concentration | 3.2mg/ml |
| Formulation | Rabbit IgG in pH7.4 PBS, 0.05% NaN ₃ , 40% Glycerol. |
| Storage | Store at -20°C |

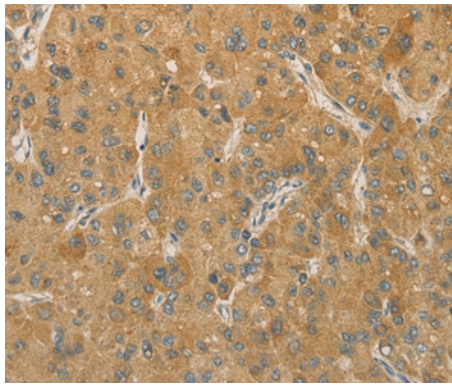
Application Details

Immunohistochemistry: 1:100-1:300

Images



Immunohistochemical analysis of paraffin-embedded Human thyroid cancer tissue using #36188 at dilution 1/80.



Immunohistochemical analysis of paraffin-embedded Human liver cancer tissue using #36188 at dilution 1/80.

Background

PRPSAP1 (phosphoribosyl pyrophosphate synthetase-associated protein 1), also known as PAP39, is a 356 amino acid ubiquitous protein belonging to the ribose-phosphate pyrophosphokinase family. PRPSAP1 may play a negative regulatory role in 5-phosphoribose 1-diphosphate synthesis and is encoded by a gene mapping to human chromosome 17q25.1.

Note: This product is for in vitro research use only