

CLCA1 antibody

Catalog No: #22096

Orders: order@signalwayantibody.com

Support: tech@signalwayantibody.com

Description

Product Name	CLCA1 antibody
Host Species	Rabbit
Clonality	Polyclonal
Purification	Purified by antigen-affinity chromatography.
Applications	WB IHC IF
Species Reactivity	Hu
Immunogen Type	Peptide
Immunogen Description	Synthetic peptide contain a sequence corresponding to a region within amino acids 542 and 603 of CLCA1
Target Name	CLCA1
Other Names	CaCC
Accession No.	Swiss-Prot:A8K7I4Gene ID:1179
Uniprot	A8K7I4
GeneID	1179;
Concentration	1 mg/ml (Please refer to the vial label for the specific concentration.)
Formulation	PBS(pH7.0), 20% Glycerol. 0.01% Thimerosal was added as a preservative.
Storage	Aliquot and store at -20B1C or below. Avoid multiple freeze-thaw cycles.

Application Details

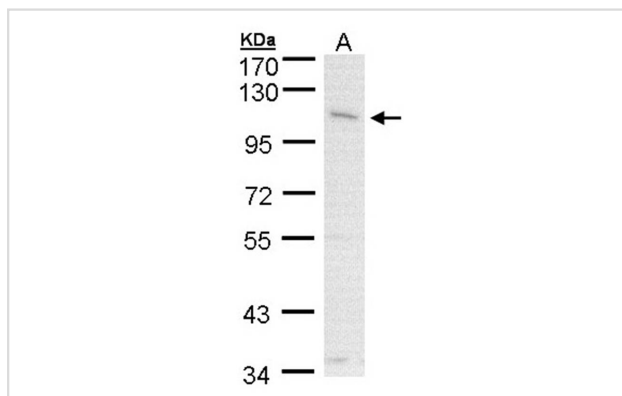
Predicted MW: 100kd

Western blotting: 1:500-1:3000

Immunohistochemistry: 1:100-1:250

Immunofluorescence: 1:100-1:200

Images

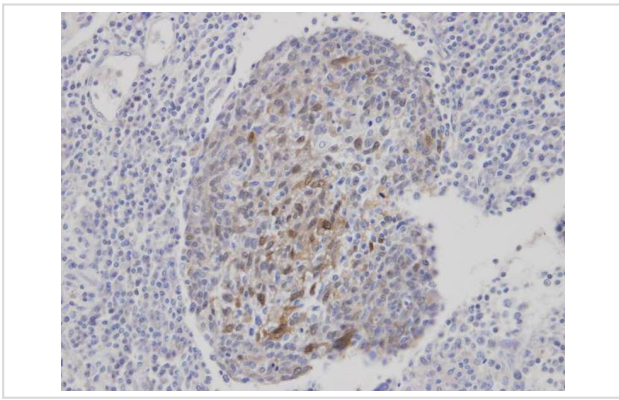


Sample (30 ug of whole cell lysate)

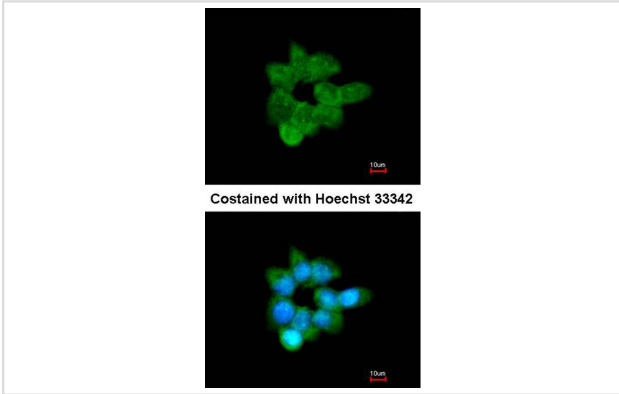
A: A431

7.5% SDS PAGE

Primary antibody diluted at 1: 1000



Immunohistochemical analysis of paraffin-embedded gastric CA, using CLCA1 antibody at 1: 100 dilution.



Immunofluorescence analysis of methanol-fixed A431, using CLCA1 antibody at 1: 200 dilution.

Background

This gene encodes a member of the calcium sensitive chloride conductance protein family. To date, all members of this gene family map to the same region on chromosome 1p31-p22 and share a high degree of homology in size, sequence, and predicted structure, but differ significantly in their tissue distributions. The encoded protein is expressed as a precursor protein that is processed into two cell-surface-associated subunits, although the site at which the precursor is cleaved has not been precisely determined. The encoded protein may be involved in mediating calcium-activated chloride conductance in the intestine. [provided by RefSeq]

Note: This product is for in vitro research use only