

## RICTOR Antibody

Catalog No: #36195

Orders: [order@signalwayantibody.com](mailto:order@signalwayantibody.com)Support: [tech@signalwayantibody.com](mailto:tech@signalwayantibody.com)

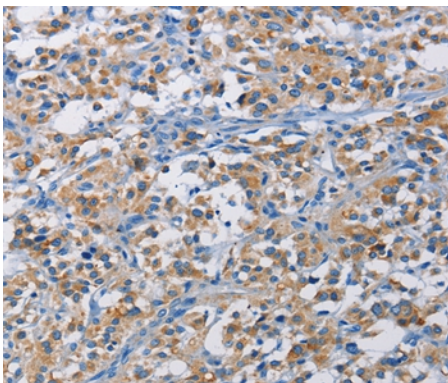
## Description

Product Name	RICTOR Antibody
Host Species	Rabbit
Clonality	Polyclonal
Purification	Antigen affinity purification.
Applications	IHC
Species Reactivity	Hu
Specificity	The antibody detects endogenous levels of total RICTOR protein.
Immunogen Type	Recombinant Protein
Immunogen Description	Full length fusion protein
Target Name	RICTOR
Other Names	PIA; AVO3; hAVO3
Accession No.	Swiss-Prot#: Q6R327NCBI Gene ID: 253260Gene Accssion: BC029608
Uniprot	Q6R327
GeneID	253260;
Concentration	2mg/ml
Formulation	Rabbit IgG in pH7.4 PBS, 0.05% NaN <sub>3</sub> , 40% Glycerol.
Storage	Store at -20°C

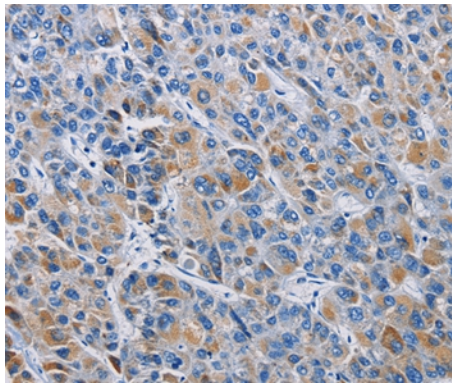
## Application Details

Immunohistochemistry: 1:25-1:200

## Images



Immunohistochemical analysis of paraffin-embedded Human thyroid cancer tissue using #36195 at dilution 1/50.



Immunohistochemical analysis of paraffin-embedded Human liver cancer tissue using #36195 at dilution 1/50.

## Background

Rapamycin-insensitive companion of mTOR is a protein that in humans is encoded by the RICTOR gene. RICTOR and MTOR are components of a protein complex that integrates nutrient- and growth factor-derived signals to regulate cell growth. Subunit of mTORC2, which regulates cell growth and survival in response to hormonal signals. mTORC2 is activated by growth factors, but, in contrast to mTORC1, seems to be nutrient-insensitive. mTORC2 seems to function upstream of Rho GTPases to regulate the actin cytoskeleton, probably by activating one or more Rho-type guanine nucleotide exchange factors.

Note: This product is for in vitro research use only