

STK40 Antibody

Catalog No: #36201

Orders: order@signalwayantibody.comSupport: tech@signalwayantibody.com

Description

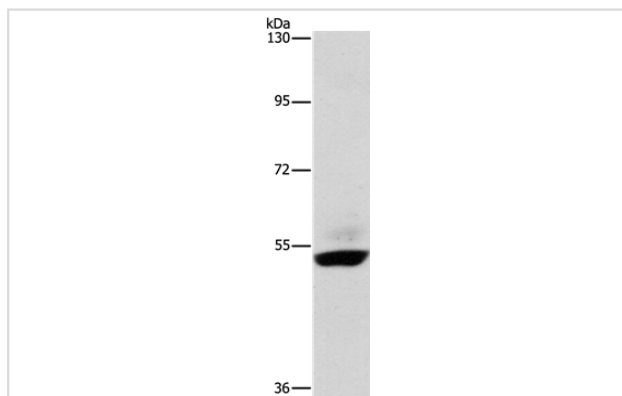
Product Name	STK40 Antibody
Host Species	Rabbit
Clonality	Polyclonal
Purification	Antigen affinity purification.
Applications	WB IHC
Species Reactivity	Hu
Specificity	The antibody detects endogenous levels of total STK40 protein.
Immunogen Type	Recombinant Protein
Immunogen Description	Full length fusion protein
Target Name	STK40
Other Names	SHIK; SgK495
Accession No.	Swiss-Prot#: Q8N2I9NCBI Gene ID: 83931Gene Accssion: BC008344
Uniprot	Q8N2I9
GeneID	83931;
SDS-PAGE MW	49kd
Concentration	1.5mg/ml
Formulation	Rabbit IgG in pH7.4 PBS, 0.05% NaN ₃ , 40% Glycerol.
Storage	Store at -20°C

Application Details

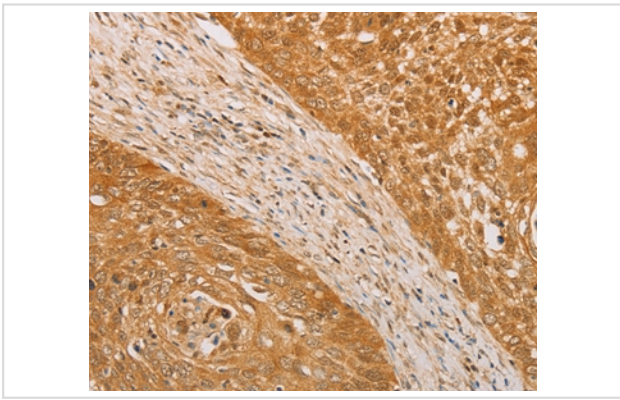
Western blotting: 1:200-1:1000

Immunohistochemistry: 1:50-1:200

Images



Gel: 6%SDS-PAGE
 Lysates (from left to right): Human placenta tissue
 Amount of lysate: 40ug per lane
 Primary antibody: 1/400 dilution
 Secondary antibody dilution: 1/8000
 Exposure time: 2 minutes



Immunohistochemical analysis of paraffin-embedded Human cervical cancer tissue using #36201 at dilution 1/30.

Background

STK40 (Serine/threonine-protein kinase 40), also known as Sugen kinase 495, is a 435 amino acid protein kinase that may be a negative regulator of NFκB and p53-mediated gene expression. Localized to both the cytoplasm and the nucleus, STK40 is ubiquitously expressed. STK40 has a central serine/threonine protein kinase domain and is homologous to TRB-3, a protein that regulates activation of MAP kinases and inhibits NFκB-mediated gene transcription.?

Note: This product is for in vitro research use only