

PIM2 Antibody

Catalog No: #36203

Orders: order@signalwayantibody.comSupport: tech@signalwayantibody.com

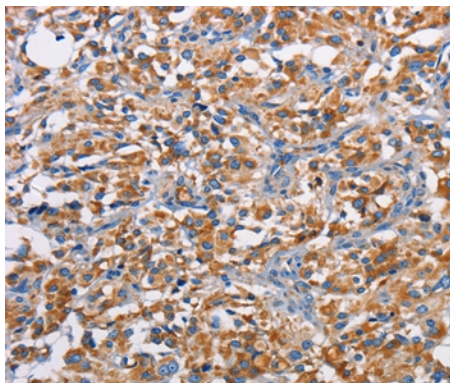
Description

Product Name	PIM2 Antibody
Host Species	Rabbit
Clonality	Polyclonal
Purification	Antigen affinity purification.
Applications	IHC
Species Reactivity	Hu
Specificity	The antibody detects endogenous levels of total PIM2 protein.
Immunogen Type	Recombinant Protein
Immunogen Description	Fusion protein corresponding to a region derived from internal residues of human pim-2 oncogene
Target Name	PIM2
Other Names	Pim-2h; pim-2 oncogene;proto-oncogene Pim-2
Accession No.	Swiss-Prot#: Q9P1W9NCBI Gene ID: 11040Gene Accssion: BC018111
Uniprot	Q9P1W9
GeneID	11040;
Concentration	1.6mg/ml
Formulation	Rabbit IgG in pH7.4 PBS, 0.05% NaN ₃ , 40% Glycerol.
Storage	Store at -20°C

Application Details

Immunohistochemistry: 1:50-1:200

Images



Immunohistochemical analysis of paraffin-embedded Human thyroid cancer tissue using #36203 at dilution 1/40.

Background

This gene encodes a protooncogene that acts as a serine/threonine protein kinase. Studies determined the encoded protein functions to prevent apoptosis and to promote cell survival. Proto-oncogene with serine/threonine kinase activity involved in cell survival and cell proliferation. Exerts its oncogenic activity through: the regulation of MYC transcriptional activity, the regulation of cell cycle progression, the regulation of cap-dependent protein translation and through survival signaling by phosphorylation of a pro-apoptotic protein, BAD. Phosphorylation of MYC leads to an increase of

MYC protein stability and thereby an increase transcriptional activity.

Note: This product is for in vitro research use only