

MAP3K13 Antibody

Catalog No: #36205

Orders: order@signalwayantibody.comSupport: tech@signalwayantibody.com

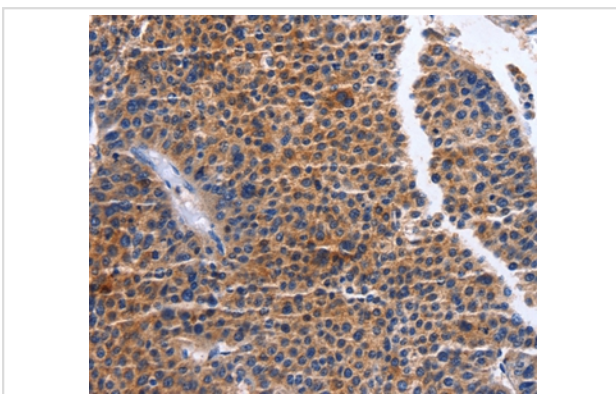
Description

Product Name	MAP3K13 Antibody
Host Species	Rabbit
Clonality	Polyclonal
Purification	Antigen affinity purification.
Applications	IHC
Species Reactivity	Hu
Specificity	The antibody detects endogenous levels of total MAP3K13 protein.
Immunogen Type	Recombinant Protein
Immunogen Description	Fusion protein corresponding to residues near the C terminal of human mitogen-activated protein kinase kinase kinase 13
Target Name	MAP3K13
Other Names	LZK; MLK; MEKK13
Accession No.	Swiss-Prot#: O43283NCBI Gene ID: 9175Gene Accssion: BC111726
Uniprot	O43283
GeneID	9175;
Concentration	1mg/ml
Formulation	Rabbit IgG in pH7.4 PBS, 0.05% NaN ₃ , 40% Glycerol.
Storage	Store at -20°C

Application Details

Immunohistochemistry: 1:25-1:100

Images



Immunohistochemical analysis of paraffin-embedded Human liver cancer tissue using #36205 at dilution 1/20.

Background

The protein encoded by this gene is a member of serine/threonine protein kinase family. This kinase contains a dual leucine-zipper motif, and has been shown to form dimers/oligomers through its leucine-zipper motif. This kinase can phosphorylate and activate MAPK8/JNK, MAP2K7/MKK7,

which suggests a role in the JNK signaling pathway.

Note: This product is for in vitro research use only