

## PACSIN2 Antibody

Catalog No: #36208

Orders: [order@signalwayantibody.com](mailto:order@signalwayantibody.com)Support: [tech@signalwayantibody.com](mailto:tech@signalwayantibody.com)

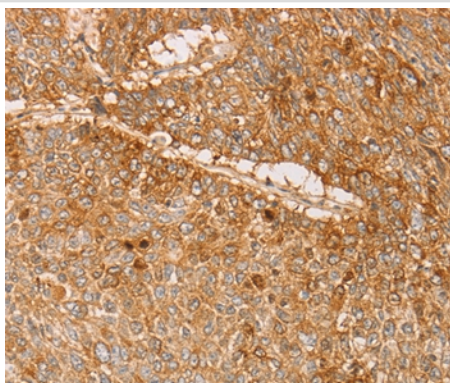
## Description

Product Name	PACSIN2 Antibody
Host Species	Rabbit
Clonality	Polyclonal
Purification	Antigen affinity purification.
Applications	IHC
Species Reactivity	Hu
Specificity	The antibody detects endogenous levels of total PACSIN2 protein.
Immunogen Type	Recombinant Protein
Immunogen Description	Fusion protein corresponding to residues near the C terminal of human protein kinase C and casein kinase substrate in neurons 2
Target Name	PACSIN2
Other Names	SDPII
Accession No.	Swiss-Prot#: Q9UNF0NCBI Gene ID: 11252Gene Accssion: BC008037
Uniprot	Q9UNF0
GeneID	11252;
Concentration	1.1mg/ml
Formulation	Rabbit IgG in pH7.4 PBS, 0.05% NaN <sub>3</sub> , 40% Glycerol.
Storage	Store at -20°C

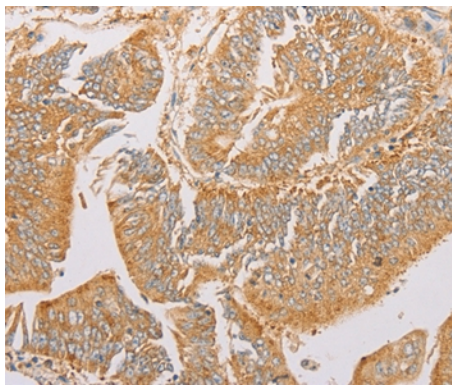
## Application Details

Immunohistochemistry: 1:25-1:100

## Images



Immunohistochemical analysis of paraffin-embedded Human lung cancer tissue using #36208 at dilution 1/20.



Immunohistochemical analysis of paraffin-embedded Human colon cancer tissue using #36208 at dilution 1/20.

## Background

This gene is a member of the protein kinase C and casein kinase substrate in neurons family. The encoded protein is involved in linking the actin cytoskeleton with vesicle formation by regulating tubulin polymerization. Alternative splicing results in multiple transcript variants.?

Note: This product is for in vitro research use only