

## CAPRIN1 Antibody

Catalog No: #36227

Orders: order@signalwayantibody.com

Support: tech@signalwayantibody.com

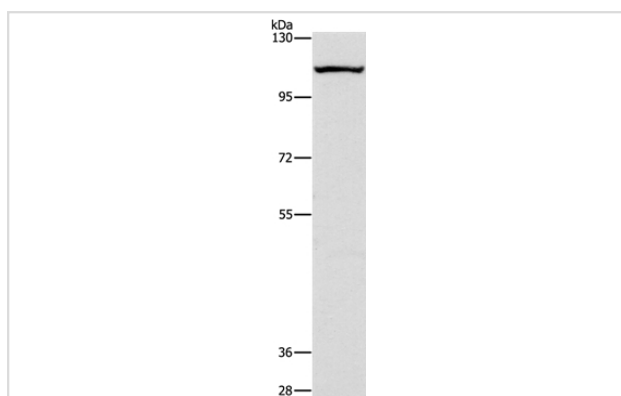
## Description

Product Name	CAPRIN1 Antibody
Host Species	Rabbit
Clonality	Polyclonal
Purification	Antigen affinity purification.
Applications	WB
Species Reactivity	Hu
Specificity	The antibody detects endogenous levels of total CAPRIN1 protein.
Immunogen Type	Recombinant Protein
Immunogen Description	Fusion protein corresponding to residues near the C terminal of human cell cycle associated protein 1
Target Name	CAPRIN1
Other Names	M11S1; GPIAP1; RNG105; GPIP137; p137GPI
Accession No.	Swiss-Prot#: Q14444NCBI Gene ID: 4076Gene Accssion: BC001731
Uniprot	Q14444
GeneID	4076;
SDS-PAGE MW	78kd
Concentration	0.8mg/ml
Formulation	Rabbit IgG in pH7.4 PBS, 0.05% NaN <sub>3</sub> , 40% Glycerol.
Storage	Store at -20°C

## Application Details

Western blotting: 1:200-1:1000

## Images



Gel: 10%SDS-PAGE  
 Lysate: 40ug K562 cell  
 Primary antibody: 1/200 dilution  
 Secondary antibody dilution: 1/8000  
 Exposure time: 40 seconds

## Background

Caprin-1 is a protein that in humans is encoded by the CAPRIN1 gene. May regulate the transport and translation of mRNAs of proteins involved in synaptic plasticity in neurons and cell proliferation and migration in multiple cell types. May form homomultimers. Directly interacts with G3BP1 in

cytoplasmic RNA granules. Binds directly and selectively to MYC and CCND2 RNAs. In neuronal cells, directly binds to several mRNAs associated with RNA granules, including BDNF, CAMK2A, CREB1, MAP2, NTRK2 mRNAs, as well as to GRIN1 and KPNB1 mRNAs, but not to rRNAs.

---

Note: This product is for in vitro research use only