

MTMR4 Antibody

Catalog No: #36229

Orders: order@signalwayantibody.comSupport: tech@signalwayantibody.com

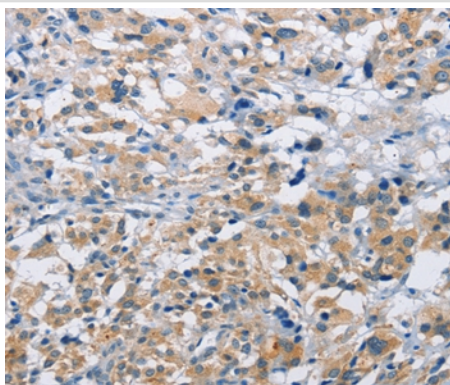
Description

Product Name	MTMR4 Antibody
Host Species	Rabbit
Clonality	Polyclonal
Purification	Antigen affinity purification.
Applications	IHC
Species Reactivity	Hu
Specificity	The antibody detects endogenous levels of total MTMR4 protein.
Immunogen Type	Recombinant Protein
Immunogen Description	Fusion protein corresponding to a region derived from internal residues of human myotubularin related protein 4
Target Name	MTMR4
Other Names	ZFYVE11; FYVE-DSP2
Accession No.	Swiss-Prot#: Q9NYA4NCBI Gene ID: 9110Gene Accssion: BC035609
Uniprot	Q9NYA4
GeneID	9110;
Concentration	0.7mg/ml
Formulation	Rabbit IgG in pH7.4 PBS, 0.05% NaN ₃ , 40% Glycerol.
Storage	Store at -20°C

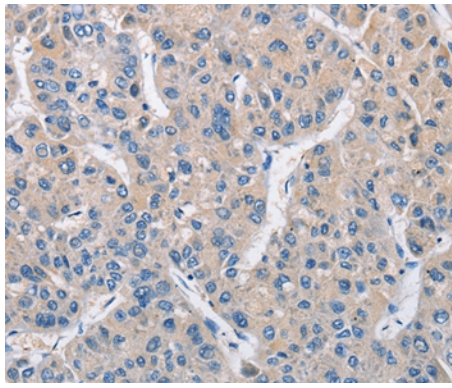
Application Details

Immunohistochemistry: 1:15-1:50

Images



Immunohistochemical analysis of paraffin-embedded Human thyroid cancer tissue using #36229 at dilution 1/15.



Immunohistochemical analysis of paraffin-embedded Human liver cancer tissue using #36229 at dilution 1/15.

Background

MTMR4(myotubularin-related protein-4) cDNA and cDNAs encoding 3 other novel members of the myotubularin protein family. Dephosphorylates proteins phosphorylated on Ser, Thr, and Tyr residues and low molecular weight phosphatase substrate para-nitrophenylphosphate. Phosphorylates phosphatidylinositol 3,4,5-trisphosphate (PIP3).

Note: This product is for in vitro research use only