

## FXYD1 Antibody

Catalog No: #36236

Orders: order@signalwayantibody.com

Support: tech@signalwayantibody.com

## Description

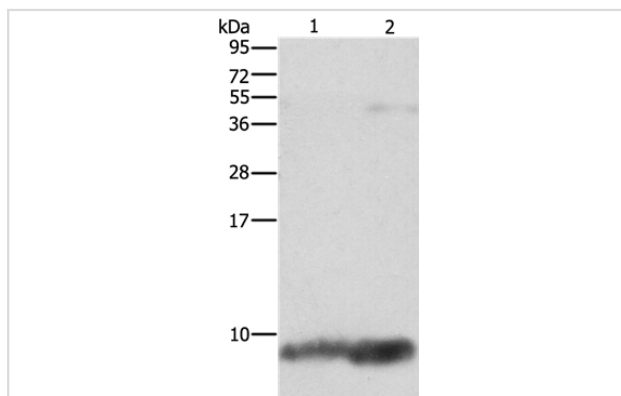
Product Name	FXYD1 Antibody
Host Species	Rabbit
Clonality	Polyclonal
Purification	Antigen affinity purification.
Applications	WB IHC
Species Reactivity	Hu Ms
Specificity	The antibody detects endogenous levels of total FXYD1 protein.
Immunogen Type	Recombinant Protein
Immunogen Description	Fusion protein corresponding to a region derived from internal residues of human FXYD domain containing ion transport regulator 1
Target Name	FXYD1
Other Names	PLM
Accession No.	Swiss-Prot#: O00168NCBI Gene ID: 5348Gene Accssion: BC032800
Uniprot	O00168
GeneID	5348;
SDS-PAGE MW	10kd
Concentration	2.6mg/ml
Formulation	Rabbit IgG in pH7.4 PBS, 0.05% NaN <sub>3</sub> , 40% Glycerol.
Storage	Store at -20°C

## Application Details

Western blotting: 1:500-1:2000

Immunohistochemistry: 1:50-1:200

## Images



Gel: 12%SDS-PAGE

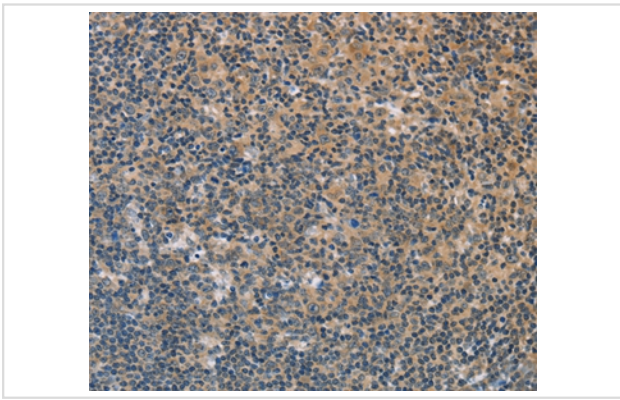
Lysates (from left to right): Mouse brain and heart tissue

Amount of lysate: 40ug per lane

Primary antibody: 1/1290 dilution

Secondary antibody dilution: 1/8000

Exposure time: 1 second



Immunohistochemical analysis of paraffin-embedded Human tonsil tissue using #36236 at dilution 1/60.

## Background

This gene encodes a member of a family of small membrane proteins that share a 35-amino acid signature sequence domain, beginning with the sequence PFXVD and containing 7 invariant and 6 highly conserved amino acids. The approved human gene nomenclature for the family is FXYD-domain containing ion transport regulator. Mouse FXYD5 has been termed RIC (Related to Ion Channel). FXYD2, also known as the gamma subunit of the Na,K-ATPase, regulates the properties of that enzyme. FXYD1 (phospholemman), FXYD2 (gamma), FXYD3 (MAT-8), FXYD4 (CHIF), and FXYD5 (RIC) have been shown to induce channel activity in experimental expression systems.?

Note: This product is for in vitro research use only