

## SPHK2 Antibody

Catalog No: #36238

Orders: order@signalwayantibody.com

Support: tech@signalwayantibody.com

## Description

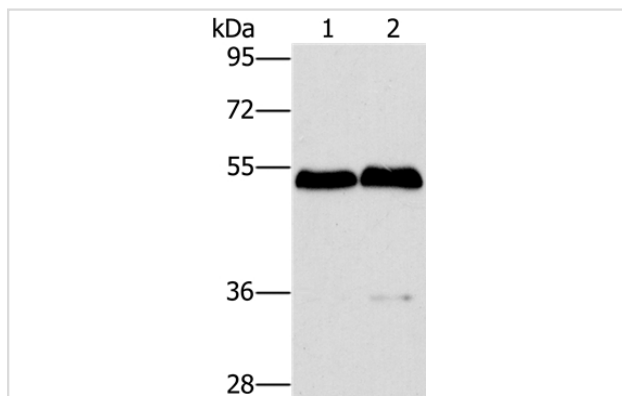
Product Name	SPHK2 Antibody
Host Species	Rabbit
Clonality	Polyclonal
Purification	Antigen affinity purification.
Applications	WB IHC
Species Reactivity	Hu Ms
Specificity	The antibody detects endogenous levels of total SPHK2 protein.
Immunogen Type	Recombinant Protein
Immunogen Description	Fusion protein corresponding to residues near the C terminal of human sphingosine kinase 2
Target Name	SPHK2
Other Names	SK 2; SK-2; SPK 2; SPK-2
Accession No.	Swiss-Prot#: Q9NRA0NCBI Gene ID: 56848Gene Accssion: BC006161/Q9NRA0
Uniprot	Q9NRA0
GeneID	56848;
SDS-PAGE MW	69kd
Concentration	2.2mg/ml
Formulation	Rabbit IgG in pH7.4 PBS, 0.05% NaN <sub>3</sub> , 40% Glycerol.
Storage	Store at -20°C

## Application Details

Western blotting: 1:200-1:1000

Immunohistochemistry: 1:25-1:100

## Images



Gel: 8%SDS-PAGE

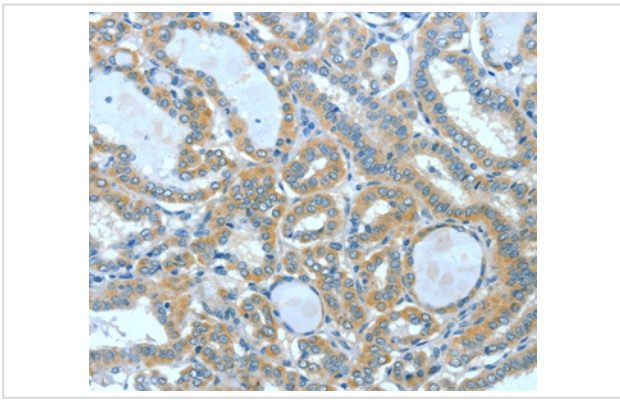
Lysates (from left to right): Mouse brain and liver tissue

Amount of lysate: 40ug per lane

Primary antibody: 1/200 dilution

Secondary antibody dilution: 1/8000

Exposure time: 5 minutes



Immunohistochemical analysis of paraffin-embedded Human thyroid cancer tissue using #36238 at dilution 1/60.

## Background

This gene encodes one of two sphingosine kinase isozymes that catalyze the phosphorylation of sphingosine into sphingosine 1-phosphate. Sphingosine 1-phosphate mediates many cellular processes including migration, proliferation and apoptosis, and also plays a role in several types of cancer by promoting angiogenesis and tumorigenesis. The encoded protein may play a role in breast cancer proliferation and chemoresistance. Alternatively spliced transcript variants encoding multiple isoforms have been observed for this gene.?

Note: This product is for in vitro research use only