

ASAH2 Antibody

Catalog No: #36240

Orders: order@signalwayantibody.com

Support: tech@signalwayantibody.com

Description

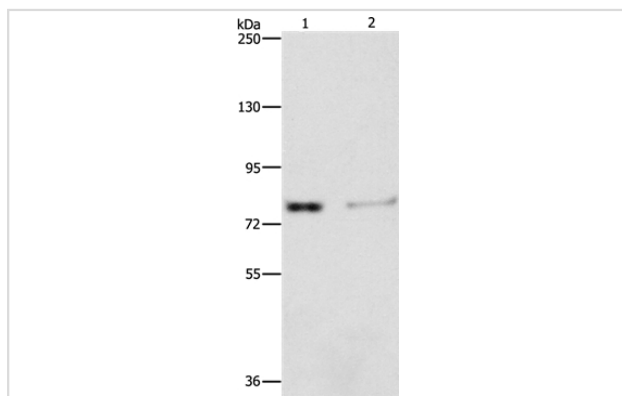
Product Name	ASAH2 Antibody
Host Species	Rabbit
Clonality	Polyclonal
Purification	Antigen affinity purification.
Applications	WB IHC
Species Reactivity	Hu
Specificity	The antibody detects endogenous levels of total ASAH2 protein.
Immunogen Type	Recombinant Protein
Immunogen Description	Fusion protein corresponding to residues near the C terminal of human N-acylsphingosine amidohydrolase (non-lysosomal ceramidase) 2
Target Name	ASAH2
Other Names	HNAC1; BCDase; LCDase; NCDase; N-CDase
Accession No.	Swiss-Prot#: Q9NR71NCBI Gene ID: 56624Gene Accssion: BC107105
Uniprot	Q9NR71
GeneID	56624;
SDS-PAGE MW	86kd
Concentration	2.4mg/ml
Formulation	Rabbit IgG in pH7.4 PBS, 0.05% NaN ₃ , 40% Glycerol.
Storage	Store at -20°C

Application Details

Western blotting: 1:200-1:1000

Immunohistochemistry: 1:25-1:100

Images



Gel: 10%SDS-PAGE

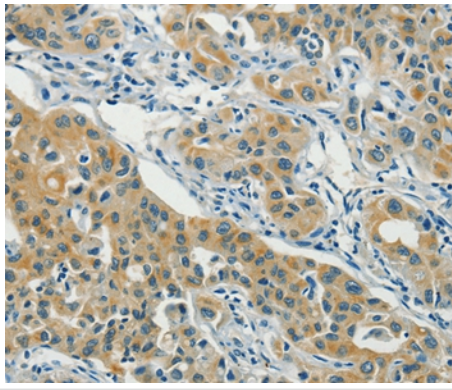
Lysates (from left to right): Human fetal kidney tissue and 293T cell

Amount of lysate: 40ug per lane

Primary antibody: 1/240 dilution

Secondary antibody dilution: 1/8000

Exposure time: 5 minutes



Immunohistochemical analysis of paraffin-embedded Human lung cancer tissue using #36240 at dilution 1/40.

Background

Ceramidases (EC 3.5.1.23), such as ASAH2, catalyze hydrolysis of the N-acyl linkage of ceramide, a second messenger in a variety of cellular events, to produce sphingosine. Sphingosine exerts both mitogenic and apoptosis-inducing activities, and its phosphorylated form functions as an intra- and intercellular second messenger.

Note: This product is for in vitro research use only