

## ASB8 Antibody

Catalog No: #36241

Orders: [order@signalwayantibody.com](mailto:order@signalwayantibody.com)Support: [tech@signalwayantibody.com](mailto:tech@signalwayantibody.com)

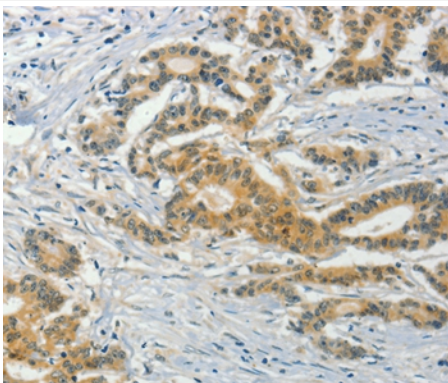
## Description

Product Name	ASB8 Antibody
Host Species	Rabbit
Clonality	Polyclonal
Purification	Antigen affinity purification.
Applications	IHC
Species Reactivity	Hu
Specificity	The antibody detects endogenous levels of total ASB8 protein.
Immunogen Type	Recombinant Protein
Immunogen Description	Fusion protein corresponding to residues near the N terminal of human ankyrin repeat and SOCS box containing 8
Target Name	ASB8
Other Names	PP14212
Accession No.	Swiss-Prot#: Q9H765NCBI Gene ID: 140461Gene Accssion: BC001321
Uniprot	Q9H765
GeneID	140461;
Concentration	3mg/ml
Formulation	Rabbit IgG in pH7.4 PBS, 0.05% NaN <sub>3</sub> , 40% Glycerol.
Storage	Store at -20°C

## Application Details

Immunohistochemistry: 1:25-1:100

## Images



Immunohistochemical analysis of paraffin-embedded Human colon cancer tissue using #36241 at dilution 1/50.

## Background

ASB-8 (ankyrin repeat and SOCS box-containing 8) is a 288 amino acid member of the ASB family that contains one SOCS box domain and four ANK repeats. Localized to the cytoplasm, ASB-8 functions as a substrate-recognition component of an E3 ubiquitin-protein ligase complex and, working in

conjunction with other proteins, plays a role in the ubiquitination and subsequent proteasomal degradation of target proteins. The highest level of ASB-8 expression has been detected in skeletal muscle. ASB-8 is also expressed in heart, brain, placenta, liver, kidney and pancreas.

---

Note: This product is for in vitro research use only