

PSAT1 antibody

Catalog No: #22101

Orders: order@signalwayantibody.com

Support: tech@signalwayantibody.com

Description

Product Name	PSAT1 antibody
Host Species	Rabbit
Clonality	Polyclonal
Purification	Purified by antigen-affinity chromatography.
Applications	WB IHC IF
Species Reactivity	Hu
Immunogen Type	Recombinant protein
Immunogen Description	Recombinant protein fragment contain a sequence corresponding to a region within amino acids 48 and 298 of PSAT1
Target Name	PSAT1
Accession No.	Swiss-Prot:Q9Y617Gene ID:29968
Uniprot	Q9Y617
GeneID	29968;
Concentration	0.3mg/ml
Formulation	Supplied in 0.1M Tris-buffered saline with 10% Glycerol (pH7.0). 0.01% Thimerosal was added as a preservative.
Storage	Store at -20°C for long term preservation (recommended). Store at 4°C for short term use.

Application Details

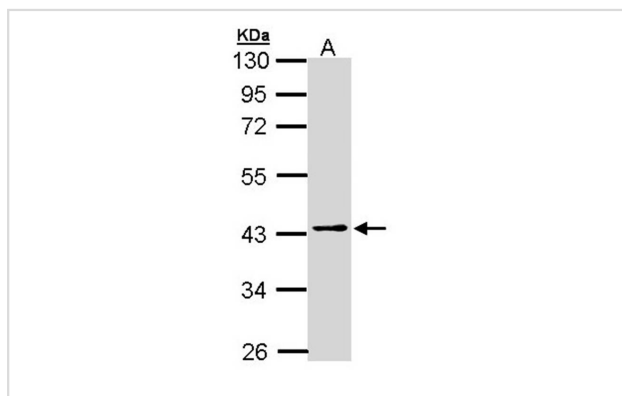
Predicted MW: 40kd

Western blotting: 1:500-1:3000

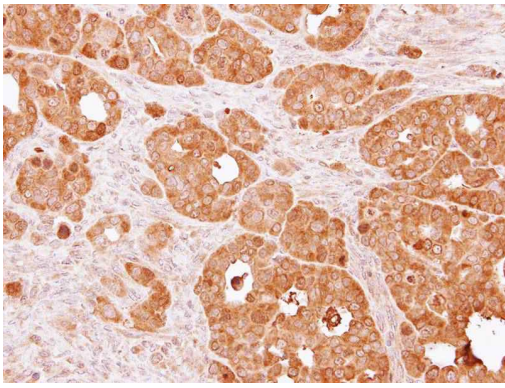
Immunohistochemistry: 1:50-1:500

Immunofluorescence: 1:100-1:200

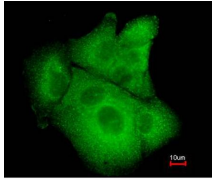
Images



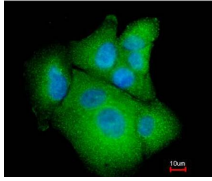
Sample (30 ug of whole cell lysate)
 A: H1299
 10% SDS PAGE
 Primary antibody diluted at 1: 1000



Immunohistochemical analysis of paraffin-embedded NCI-N87 xenograft, using PSAT1 antibody at 1: 500 dilution.



Merged with DNA probe



Immunofluorescence analysis of paraformaldehyde-fixed A549, using PSAT1 antibody at 1: 200 dilution.

Background

The protein encoded by this gene is likely a phosphoserine aminotransferase, based on similarity to proteins in mouse, rabbit, and *Drosophila*. Alternative splicing of this gene results in two transcript variants encoding different isoforms. [provided by RefSeq]

Note: This product is for in vitro research use only