

Description

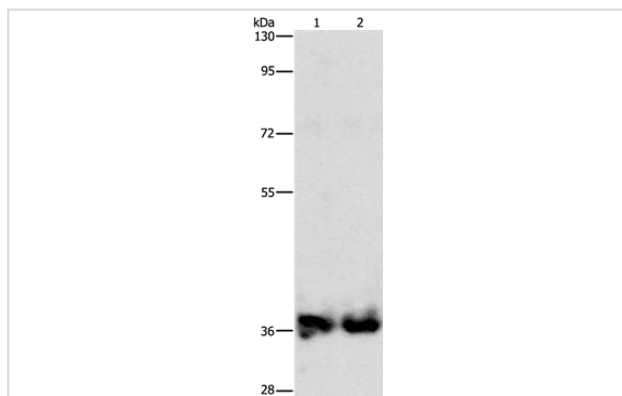
Product Name	ASPA Antibody
Host Species	Rabbit
Clonality	Polyclonal
Purification	Antigen affinity purification.
Applications	WB IHC
Species Reactivity	Hu Ms
Specificity	The antibody detects endogenous levels of total ASPA protein.
Immunogen Type	Recombinant Protein
Immunogen Description	Full length fusion protein
Target Name	ASPA
Other Names	ASP; ACY2
Accession No.	Swiss-Prot#: P45381NCBI Gene ID: 443Gene Accssion: BC029128
Uniprot	P45381
GeneID	443;
SDS-PAGE MW	36kd
Concentration	2.8mg/ml
Formulation	Rabbit IgG in pH7.4 PBS, 0.05% NaN ₃ , 40% Glycerol.
Storage	Store at -20°C

Application Details

Western blotting: 1:1000-1:5000

Immunohistochemistry: 1:100-1:300

Images



Gel: 8%SDS-PAGE

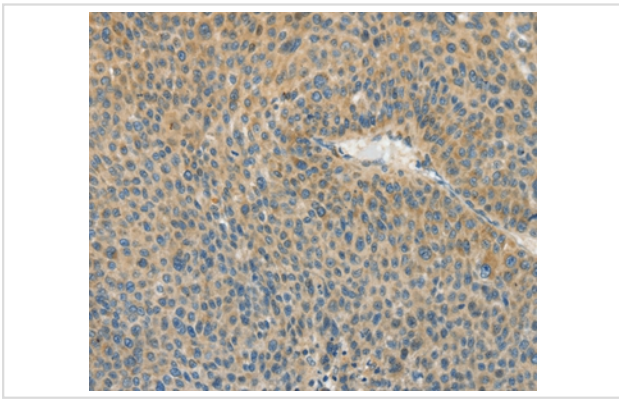
Lysates (from left to right): Mouse kidney and human fetal kidney tissue

Amount of lysate: 40ug per lane

Primary antibody: 1/1400 dilution

Secondary antibody dilution: 1/8000

Exposure time: 1 second



Immunohistochemical analysis of paraffin-embedded Human liver cancer tissue using #36246 at dilution 1/80.

Background

This gene encodes an enzyme that catalyzes the conversion of N-acetyl_L-aspartic acid (NAA) to aspartate and acetate. NAA is abundant in the brain where hydrolysis by aspartoacylase is thought to help maintain white matter. This protein is an NAA scavenger in other tissues. Mutations in this gene cause Canavan disease. Alternatively spliced transcript variants have been found for this gene.

Note: This product is for in vitro research use only